

LOC/DME I-BXN <b>111.9</b> Chan <b>56</b>	APP CRS <b>356°</b>	Rwy 36L Idg <b>13400</b> TDZE <b>588</b> Apt Elev <b>606</b>	Rwy 36R Idg <b>13401</b> TDZE <b>581</b> Apt Elev <b>606</b>
---	------------------------	--	--

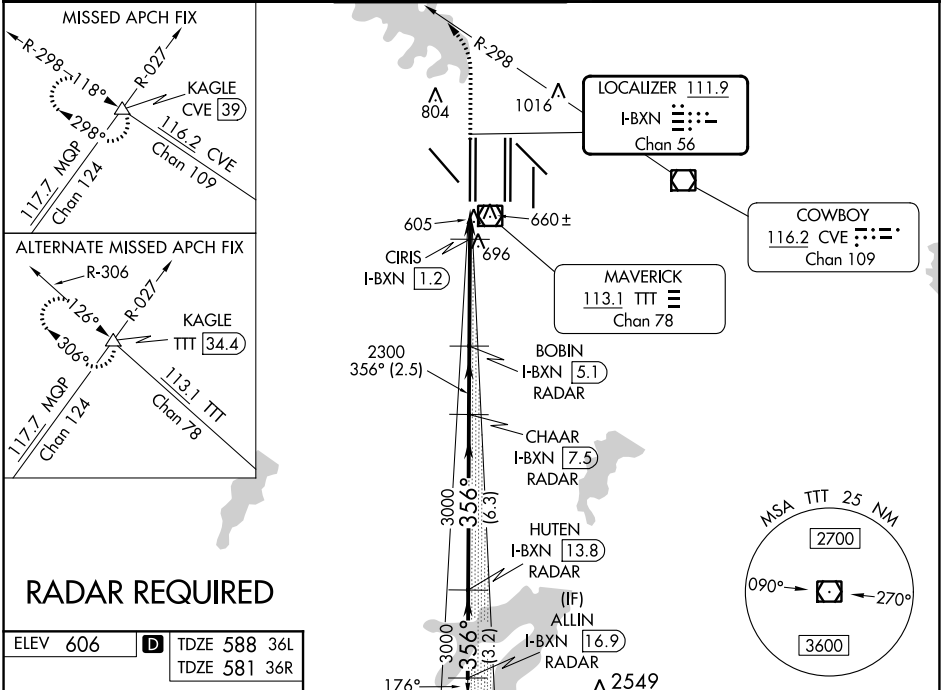
# ILS or LOC RWY 36L

DALLAS-FORT WORTH INTL (DFW)

⚠ Inop table does not apply to Sideslip 36R. Simultaneous approach authorized with Rwy 35L/C/R. DME or RADAR required. For inop ALS, increase S-LOC 36L Cat C and D visibility to 1½ SM. For inop ALS, increase CIRIS fix minimums (DME required) S-LOC 36L Cats C and D visibility to RVR 5500.

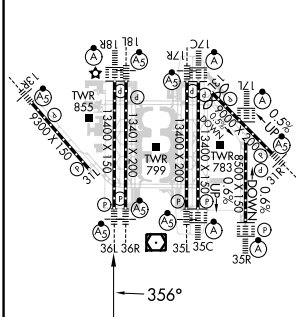
Rwys 36L/R MALSR  
MISSED APPROACH: Climb to 1100 then climbing left turn to 3000 on heading 315° and CVE VOR/DME R-298 to KAGLE INT/ CVE VOR/DME 39 DME and hold.

D-ATIS ARR <b>123.775</b> DEP <b>135.925</b>	REGIONAL APP CON <b>118.425</b>	DFW TOWER <b>126.55 127.5</b> EAST <b>124.15 134.9</b> WEST	GND CON <b>121.65 121.8</b> EAST <b>121.85</b> WEST	CLNC DEL <b>128.25</b>	CPDLC
--	------------------------------------	---	---	---------------------------	-------



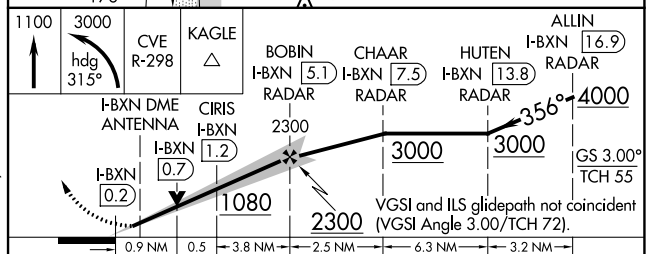
## RADAR REQUIRED

ELEV <b>606</b>	<b>D</b>	TDZE <b>588 36L</b> TDZE <b>581 36R</b>
-----------------	----------	--



HIRL all Rwys  
REIL Rwys 13L and 31L  
TDZ/CL all Rwys except 13L and 31L

FAF to MAP 5.2 NM					
Knots	60	90	120	150	180
Min:Sec	5:12	3:28	2:36	2:05	1:44



CATEGORY	A	B	C	D
S-ILS 36L	788/18 200 (200-½)			
S-LOC 36L	1080/24	492 (500-½)	1080/50	492 (500-1)
SIDESTEP 36R	1080/50	499 (500-1)	1080-1½	499 (500-1½)
CIRIS FIX MINIMUMS (DME required)				
S-LOC 36L	940/24	352 (400-½)	940/30	352 (400-¾)

SC-2, 03 OCT 2024 to 31 OCT 2024

SC-2, 03 OCT 2024 to 31 OCT 2024