

WAAS CH 86807 W18A	APP CRS 176°	Rwy Idg 13401 TDZE 602 Apt Elev 606
--	------------------------	--

RNAV (GPS) RWY 18L

DALLAS-FORT WORTH INTL (DFW)

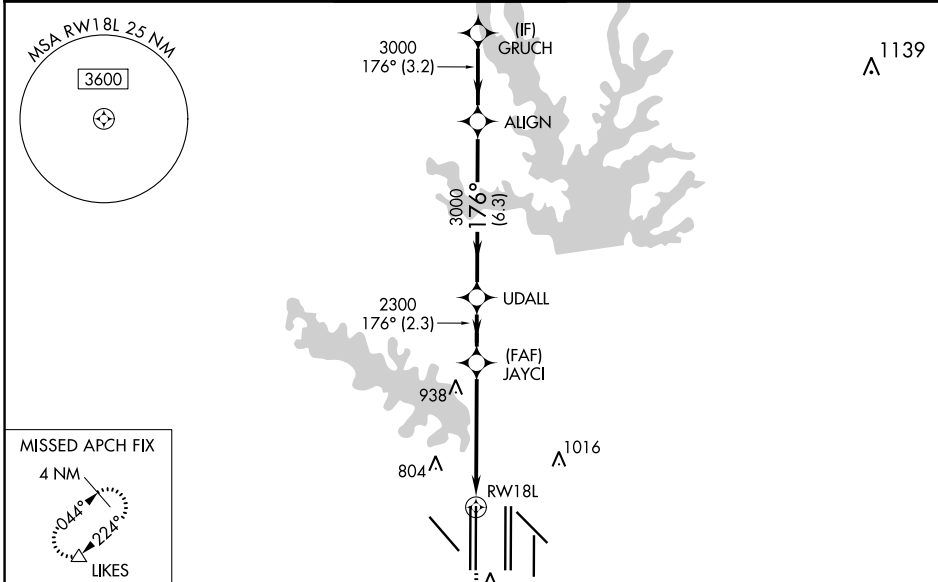
RADAR required for procedure entry. RNP APCH.

Simultaneous approach authorized with Rwy 17L/C/R. For uncompensated Baro-VNAV systems, LNAV/VNAV NA below -4°C or above 54°C. LNAV procedure NA during simultaneous operations. Use of FD or AP providing RNAV track guidance required during simultaneous operations. For inop ALS, increase LNAV/VNAV all Cats visibility to RVR 6000 and LNAV Cats C and D visibility to 1¼ SM.

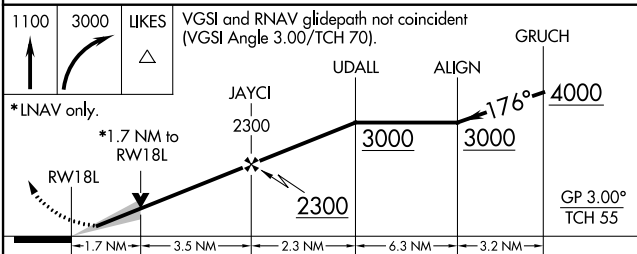
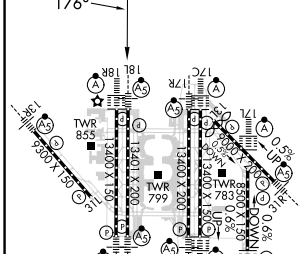


MISSED APPROACH: Climb to 1100, then climbing right turn to 3000 direct LIKES and hold.

D-ATIS ARR 123.775 DEP 135.925	REGIONAL APP CON 118.425	DFW TOWER 126.55 127.5 EAST 124.15 134.9 WEST	GND CON 121.65 121.8 EAST 121.85 WEST	CLNC DEL 128.25	CPDLC
--	------------------------------------	---	---	---------------------------	-------



ELEV 606	D	TDZE 602
-----------------	----------	-----------------



CATEGORY	A	B	C	D
LPV DA		802/18	200 (200-½)	
LNAV/VNAV DA		1013/40	411 (500-¾)	
LNAV MDA	1220/24	618 (700-½)	1220-1⅜	618 (700-1⅜)

HIRL all Rwys
REIL Rws 13L and 31L
TDZ/CL all Rws except 13L and 31L

SC-2, 03 OCT 2024 to 31 OCT 2024

SC-2, 03 OCT 2024 to 31 OCT 2024