


APP CRS 135°	Rwy Idg 9300
	TDZE 591
	Apt Elev 606

RNAV (RNP) Z RWY 13R

DALLAS-FORT WORTH INTL (DFW)

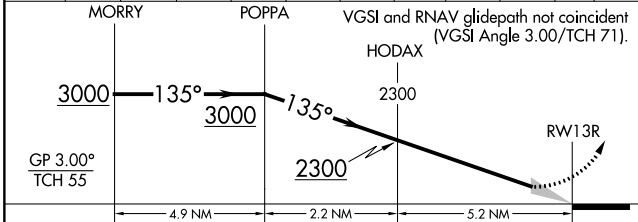
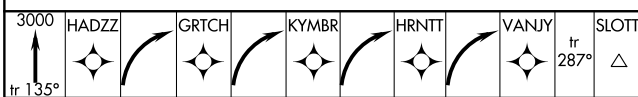
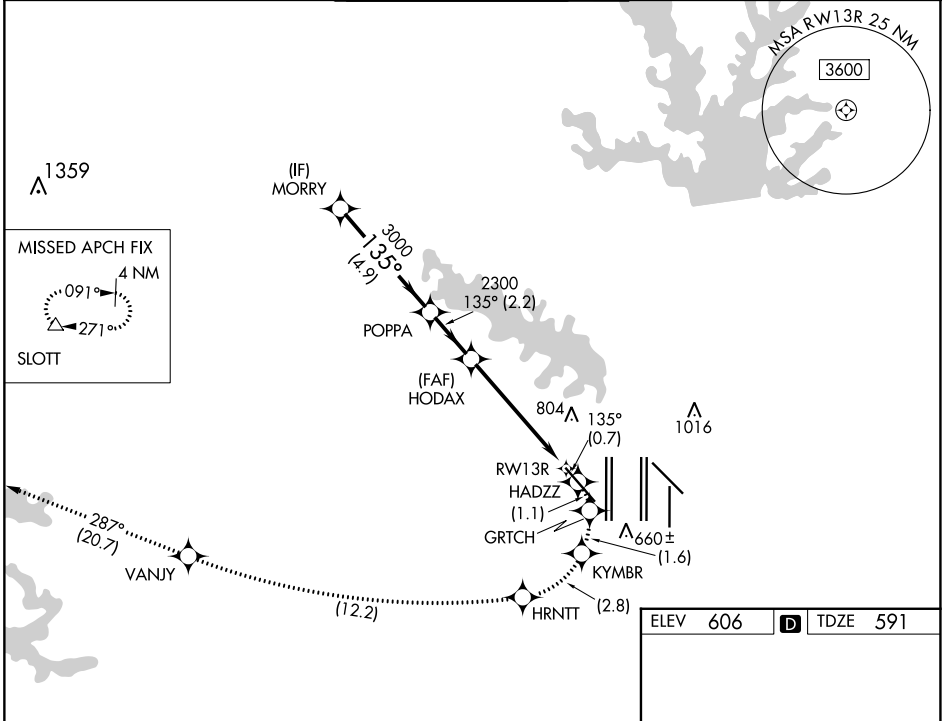
RNP AR APCH. RF required.

▽ For uncompensated Baro-VNAV systems, procedure NA below -6°C or above 54°C. Missed approach requires RNP less than 1.0.

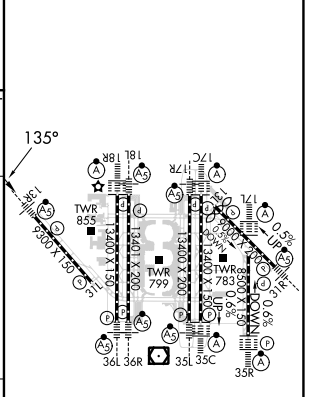
MALSR 

MISSED APPROACH: (Do not exceed 185K until HRNTT) Climb to 3000 on the RNAV missed approach route to SLOTT and hold.

D-ATIS ARR 123.775 DEP 135.925	REGIONAL APP CON 133.15 118.1	DFW TOWER 126.55 127.5 EAST 124.15 134.9 WEST	GND CON 121.65 121.8 EAST 121.85 WEST	CLNC DEL 128.25	CPDLC
--	---	---	---	---------------------------	-------



ELEV 606	D TDZE 591
----------	-------------------



CATEGORY	A	B	C	D
RNP 0.30 DA	1041/45		450 (500-7%)	

AUTHORIZATION REQUIRED

HIRL all Rwys
REIL Rwys 13L and 31L
TDZ/CL all Rwys except 13L and 31L

SC-2, 03 OCT 2024 to 31 OCT 2024

SC-2, 03 OCT 2024 to 31 OCT 2024