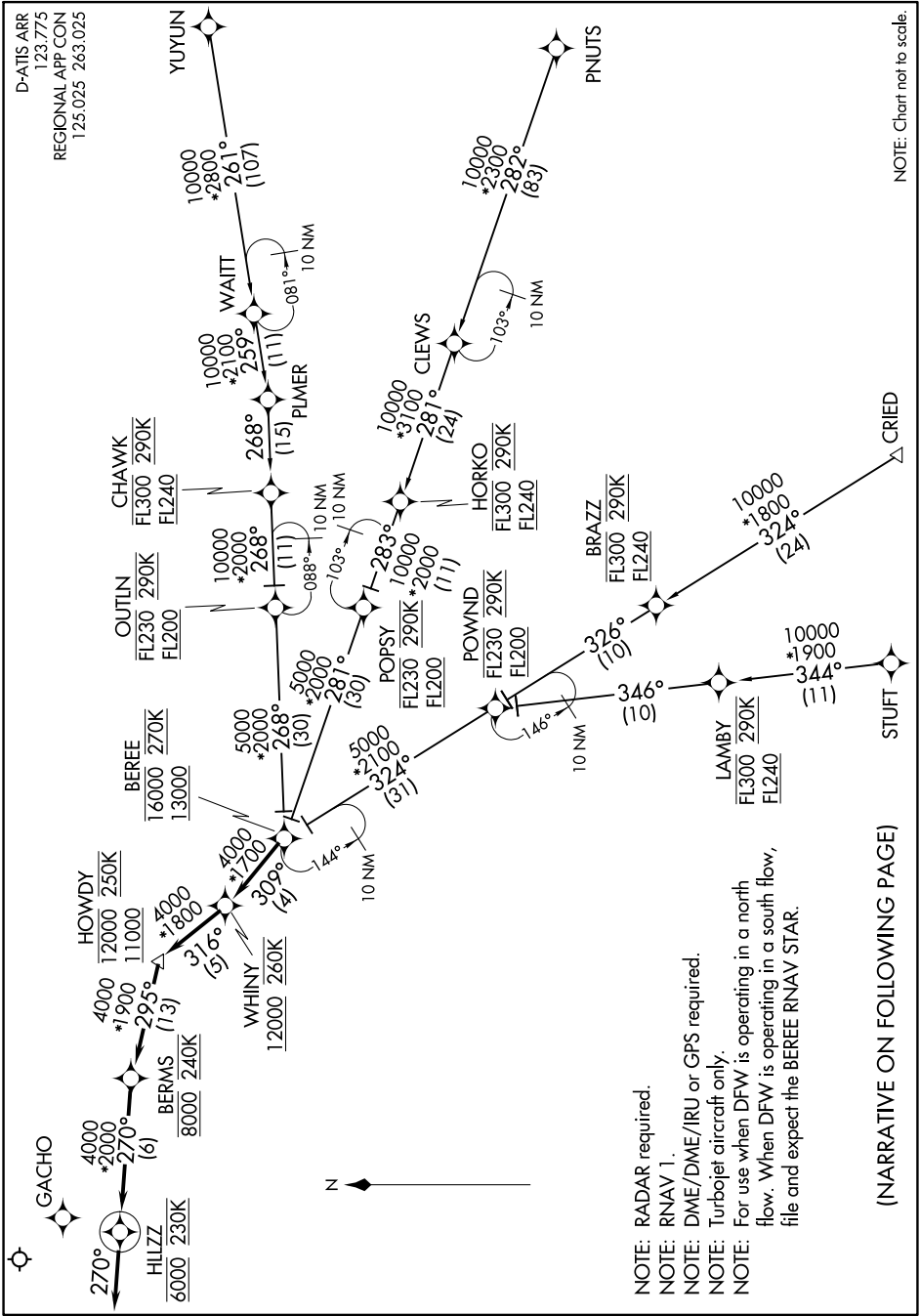


WHINY FOUR ARRIVAL (RNAV)

D-ATIS ARR
123.775
REGIONAL APP CON
125.025 263.025

SC-2, 03 OCT 2024 to 31 OCT 2024



NOTE: Chart not to scale.

NOTE: RADAR required.
 NOTE: RNAV 1.
 NOTE: DME/DME/IRU or GPS required.
 NOTE: Turbojet aircraft only.
 NOTE: For use when DFW is operating in a north flow. When DFW is operating in a south flow, file and expect the BEREE RNAV STAR.

(NARRATIVE ON FOLLOWING PAGE)

SC-2, 03 OCT 2024 to 31 OCT 2024

WHINY FOUR ARRIVAL (RNAV)