

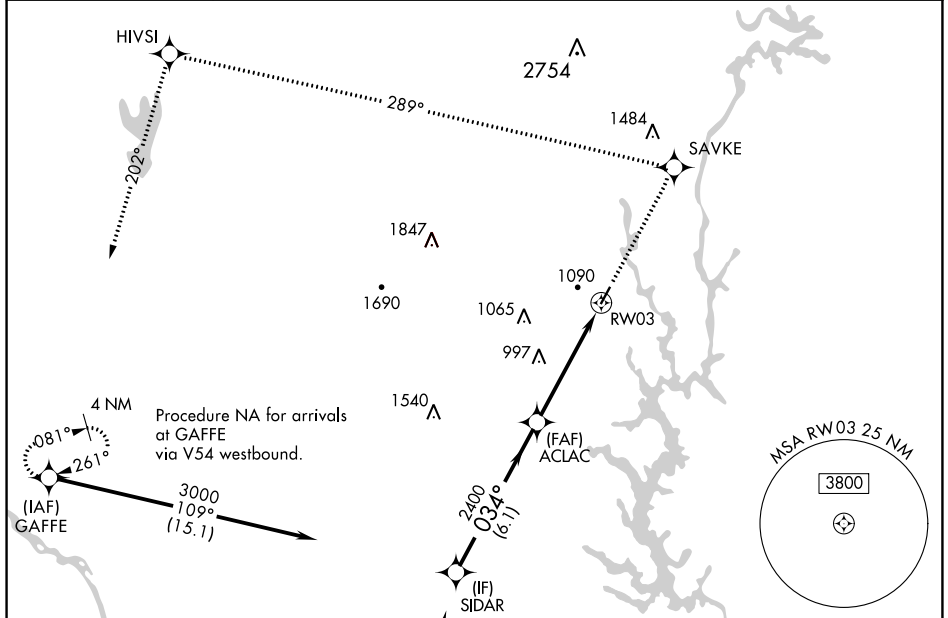
WAAS CH <b>90302</b> <b>W03A</b>	APP CRS <b>034°</b>	Rwy Idg TDZE Apt Elev	<b>3769</b> <b>798</b> <b>798</b>
--	------------------------	-----------------------------	---

# RNAV (GPS) RWY 3

GASTONIA MUNI (AKH)

RNP APCH. ▼ If local altimeter setting not received, use Charlotte Douglas Intl altimeter setting and increase all DAs/MDAs 40 feet. Inoperative table does not apply.	ODALS ⬇	MISSED APPROACH: Climb to 3200 direct SAVKE and via 289° track to HIVSI and 202° track to GAFFE and hold.
---	------------	---

ASOS <b>135.725</b>	CHARLOTTE APP CON <b>120.05 257.2</b>	CLNC DEL <b>127.2</b>	UNICOM <b>123.0 (CTAF) 0</b>
------------------------	--	--------------------------	---------------------------------



SE-2, 03 OCT 2024 to 31 OCT 2024

SE-2, 03 OCT 2024 to 31 OCT 2024

ELEV 798	TDZE 798
----------	----------

VGSi and RNAV glidepath not coincident (VGSi Angle 3.00/TCH 26).		3200 SAVKE	HIVSI	GAFFE
Procedure Turn NA		↑	tr 289°	tr 202°
SIDAR	3000	ACLAC	RW03	
GP 3.00°	034°	2400		
TCH 40	6.1 NM	4.8 NM		
CATEGORY	A	B	C	D
LPV DA	1118-1¼	320 (400-1¼)		NA
LNAV MDA	1440-1	642 (700-1)	1440-1¾ 642 (700-1¾)	NA

