

WAAS CH 70407 W29A	APP CRS 291°	Rwy Idg TDZE Apt Elev	5480 127 145
--	------------------------	-----------------------------	---

RNAV (GPS) RWY 29

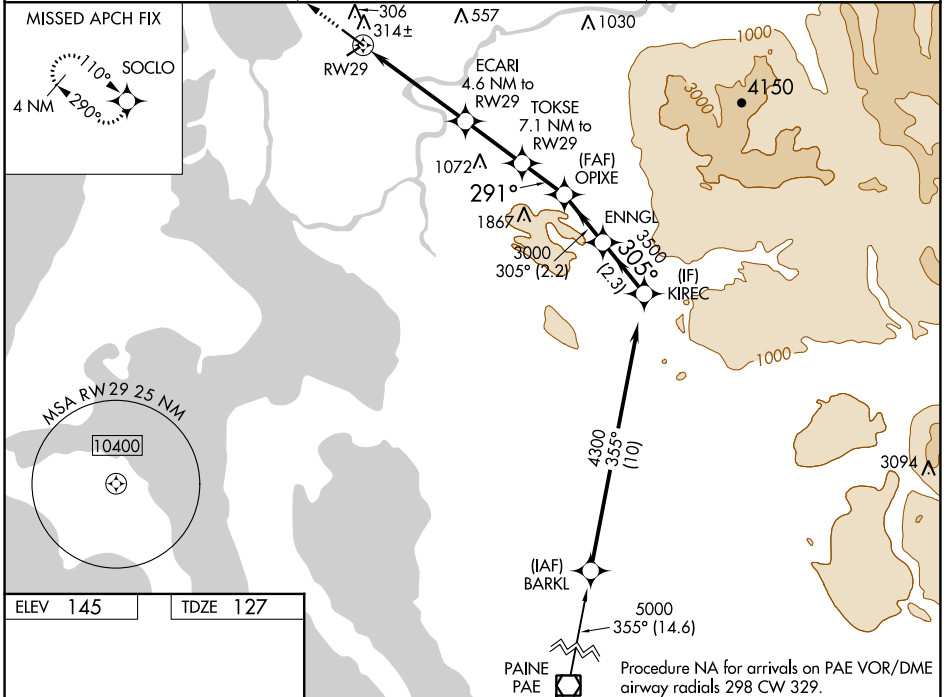
SKAGIT RGNL (BVS)

RNP APCH.

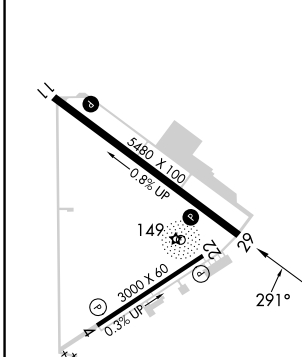
▼ For uncompensated Baro-VNAV systems, LNAV/VNAV NA below -15°C or above 54°C.
 ▲ Baro-VNAV and VDP NA when using Friday Harbor altimeter setting. When local altimeter setting not received use Friday Harbor altimeter setting; increase LPV DA to 438 feet, LNAV/VNAV DA to 536 feet and all Cats visibility ¼ SM; increase all MDA 60 feet.

MISSED APPROACH: Climb to 4000 direct SOCLO and hold, continue climb-in-hold to 4000.

AWOS-3 121.125	WHIDBEY APP CON 120.7 270.8	UNICOM 123.075 (CTAF)
--------------------------	---------------------------------------	---------------------------------



ELEV 145	TDZE 127
----------	----------



LIRL Rwy 4-22
 REIL Rws 11 and 29
 MIRL Rwy 11-29

4000	SOCLO						
*LNAV only		RWY 29	ECARI 4.6 NM to RWY 29	TOKSE 7.1 NM to RWY 29	OPIXE 3000	ENNGL	KIREC 4300
		1.4 NM	3.2 NM	2.5 NM	1.9 NM	2.2 NM	2.3 NM
CATEGORY	A	B	C	D			
LPV DA		377-7/8		250 (300-7/8)			
LNAV/VNAV DA		475-1 1/4		348 (400-1 1/4)			
LNAV MDA	580-1	453 (500-1)		580-1 3/8		453 (500-1 3/8)	

NW-1, 03 OCT 2024 to 31 OCT 2024

NW-1, 03 OCT 2024 to 31 OCT 2024