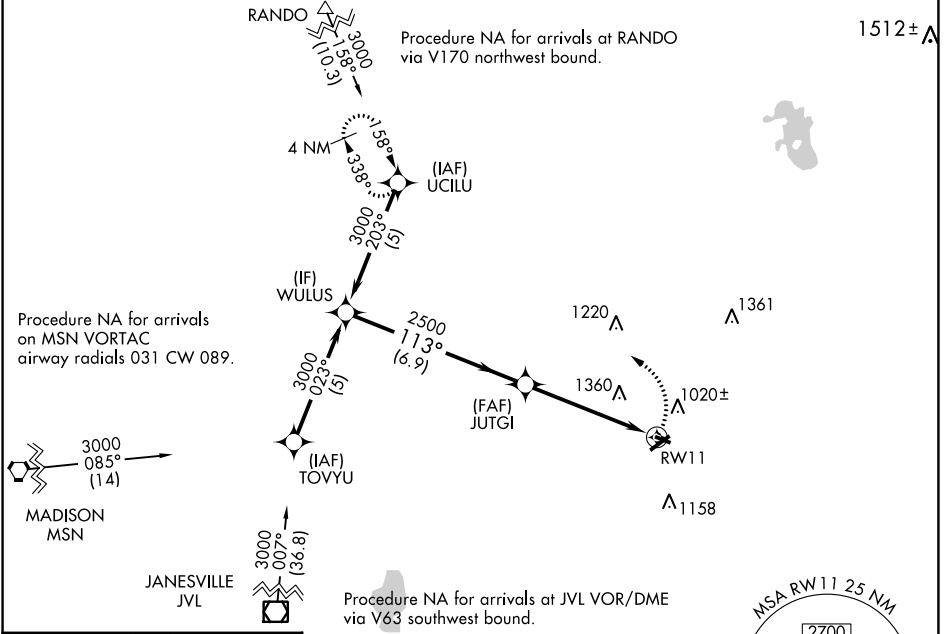


APP CRS	Rwy Idg	<b>2801</b>
<b>113°</b>	TDZE	<b>833</b>
	Apt Elev	<b>833</b>

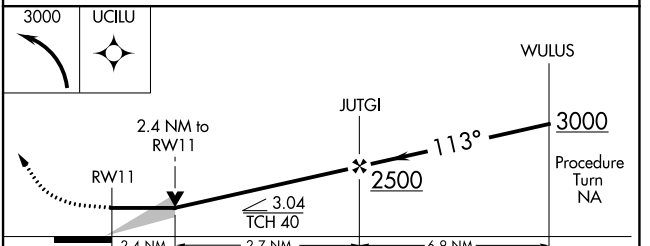
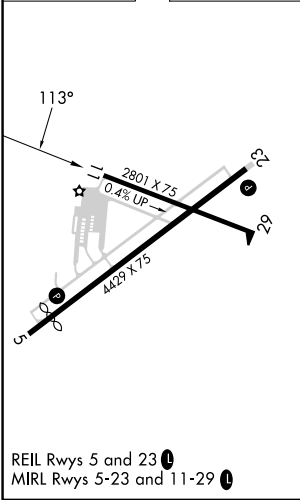
# RNAV (GPS) RWY 11

WATERTOWN MUNI (RYV)

RNP APCH.		<p><b>MISSED APPROACH:</b> Climbing left turn to 3000 direct UCILU and hold.</p>
<p><b>⚠</b> When local altimeter setting not received, use Dodge County altimeter setting and increase all MDAs 60 feet and Circling visibility Cat A ¼ SM. VDP NA when using Dodge County altimeter setting. Circling Rwy 23 NA at night.</p>		
AWOS-3 <b>119.975</b>	MADISON APP CON * <b>119.15 343.7</b>	UNICOM <b>122.8 (CTAF) 0</b>



ELEV 833 **D** TDZE 833



	A	B	C	D
CATEGORY	A	B	C	D
LNAV MDA	1640-1 807 (900-1)	1640-1¼ 807 (900-1¼)	1640-2½	807 (900-2½)
CIRCLING	1640-1 807 (900-1)	1640-1¼ 807 (900-1¼)	1720-2¾ 887 (900-2¾)	1720-3 887 (900-3)

EC-3, 03 OCT 2024 to 31 OCT 2024

EC-3, 03 OCT 2024 to 31 OCT 2024