

WAAS CH 58108 W23A	APP CRS 229°	Rwy Idg TDZE Apt Elev	6005 37 40
--	------------------------	-----------------------------	---------------------------------------

RNAV (GPS) RWY 23

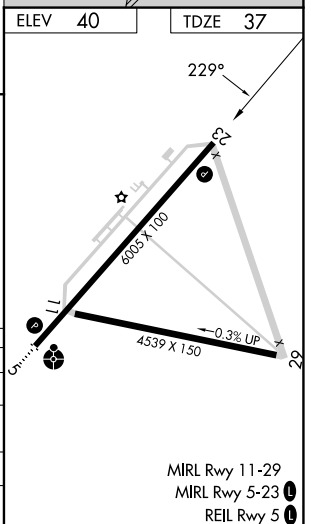
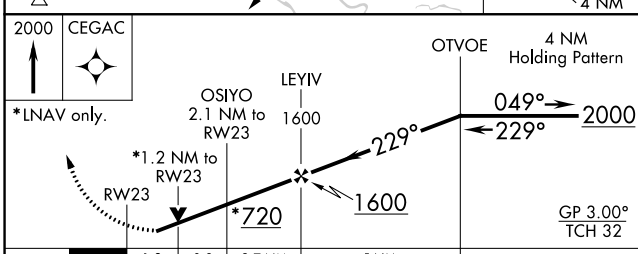
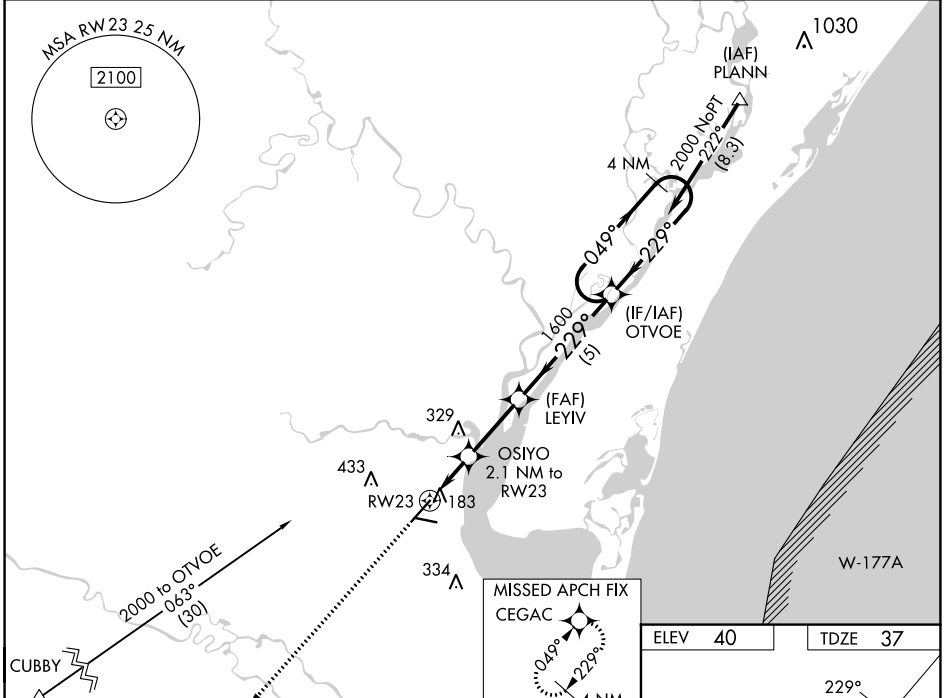
GEORGETOWN COUNTY (GGE)

RNP APCH.

⚠ For uncompensated Baro-VNAV systems, LNAV/VNAV NA below -15°C or above 54°C. Circling Rwy 11, 29 NA at night. Rwy 23 helicopter visibility reduction below ¼ SM NA.

MISSED APPROACH: Climb to 2000 direct CEGAC and hold.

AWOS-3 118.275	MYRTLE BEACH APP CON * 127.4 257.95	GCO 121.725	UNICOM 123.0 (CTAF) ①
--------------------------	---	-----------------------	--



CATEGORY	A	B	C	D
LPV DA		323-1	286 (300-1)	
LNAV/VNAV DA		347-1½	310 (400-1½)	
LNAV MDA	440-1	403 (500-1)	440-1½	403 (500-1½)
C CIRCLING	500-1 460 (500-1)	520-1 480 (500-1)	740-2 700 (700-2)	740-2¼ 700 (700-2¼)

SE-2, 03 OCT 2024 to 31 OCT 2024

SE-2, 03 OCT 2024 to 31 OCT 2024