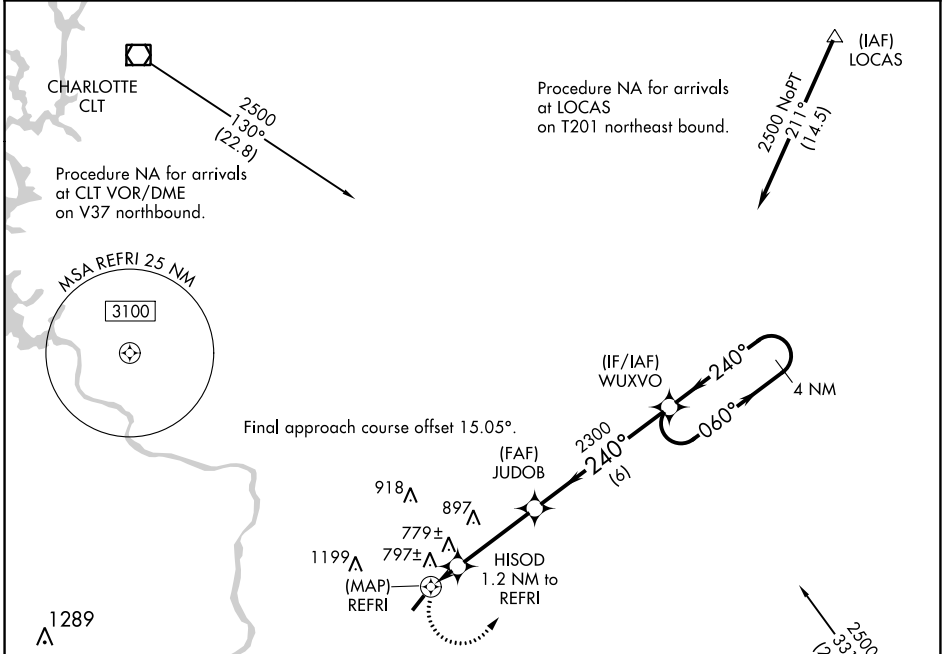


APP CRS	Rwy Idg	3109
240°	TDZE	602
	Apt Elev	602

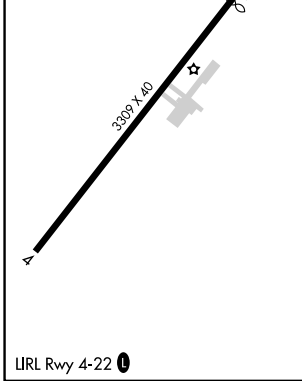
RNAV (GPS) RWY 22

JAARS-TOWNSEND (N52)

	DME/DME RNP-0.3 NA. Procedure NA at night. Helicopter visibility reduction below 1 SM NA. Use Monroe altimeter setting, when not received use Rock Hill altimeter setting and increase all MDA 20 feet.	MISSED APPROACH: Climbing left turn to 2500 direct WUXVO and hold.					
	<table border="1"> <tr> <td>EQY ASOS</td> <td>CHARLOTTE APP CON</td> <td>UNICOM</td> </tr> <tr> <td>135.775</td> <td>120.05 307.8</td> <td>123.0 (CTAF) 0</td> </tr> </table>	EQY ASOS	CHARLOTTE APP CON	UNICOM	135.775	120.05 307.8	123.0 (CTAF) 0
EQY ASOS	CHARLOTTE APP CON	UNICOM					
135.775	120.05 307.8	123.0 (CTAF) 0					



ELEV	602	TDZE	602
------	-----	------	-----



WUXVO	4 NM Holding Pattern			
CATEGORY	A	B	C	D
LNAV MDA	1080-1	478 (500-1)	NA	
CIRCLING	1160-1 558 (600-1)	1220-1 618 (700-1)	NA	

SE-2, 03 OCT 2024 to 31 OCT 2024

SE-2, 03 OCT 2024 to 31 OCT 2024