

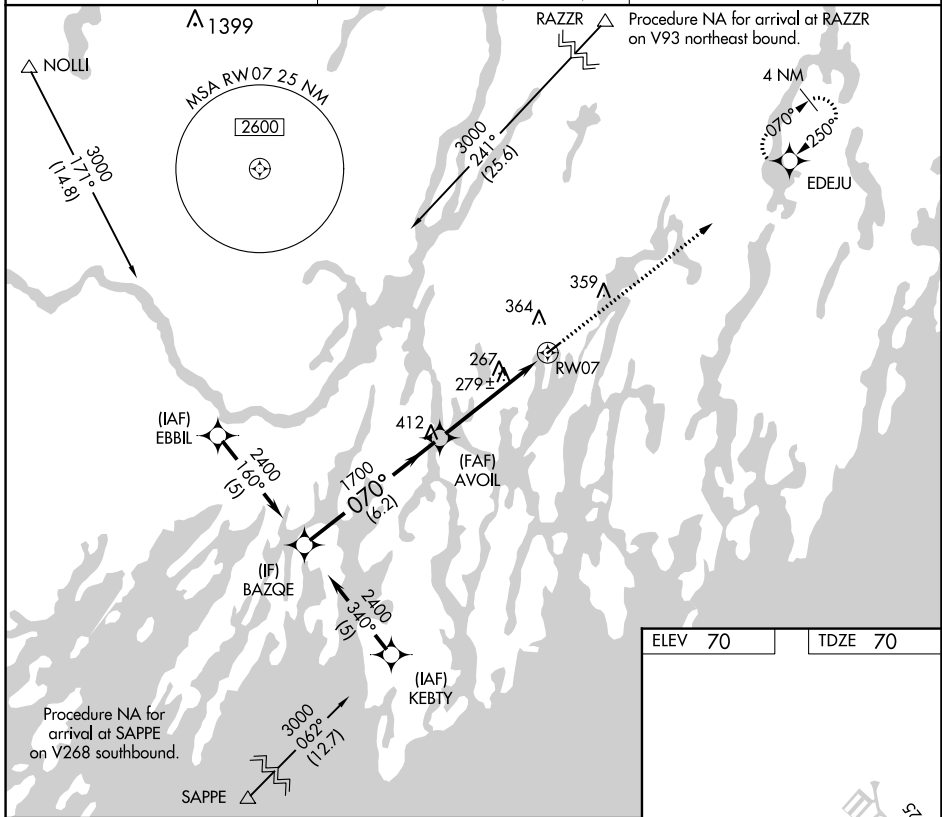
APP CRS	Rwy Idg	3397
070°	TDZE	70
	Apt Elev	70

RNAV (GPS) RWY 7

WISCASSET (IWI)

RNP APCH.	Procedure NA at night. Rwy 7 helicopter visibility reduction below 1 SM NA. When local altimeter setting not received use Rockland altimeter setting and increase all MDA 80 feet.	MISSED APPROACH: Climb to 3000 direct EDEJU and hold.
Procedure NA at night. Rwy 7 helicopter visibility reduction below 1 SM NA. When local altimeter setting not received use Rockland altimeter setting and increase all MDA 80 feet.		

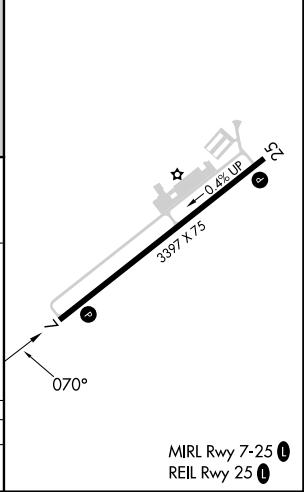
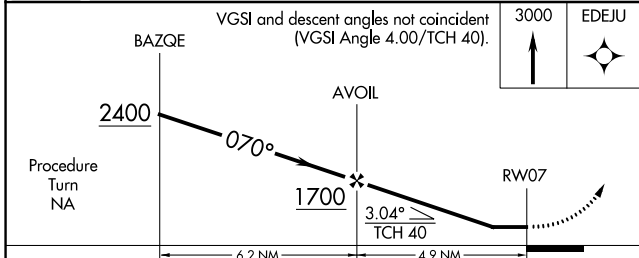
ASOS 135.725	PORTLAND APP CON★ 119.75 269.35 (112° -292°) 120.4 299.2 (293°-111°)	UNICOM 122.8 (CTAF) 0
------------------------	--	--



NE-1, 03 OCT 2024 to 31 OCT 2024

NE-1, 03 OCT 2024 to 31 OCT 2024

ELEV 70	TDZE 70
---------	---------



CATEGORY	A	B	C	D
LNAV MDA	560-1	490 (500-1)		NA