

| | | |
|--|------------------------|---|
| WAAS CH 90216 W27A | APP CRS 274° | Rwy Idg 5390 TDZE 552 Apt Elev 569 |
|--|------------------------|---|

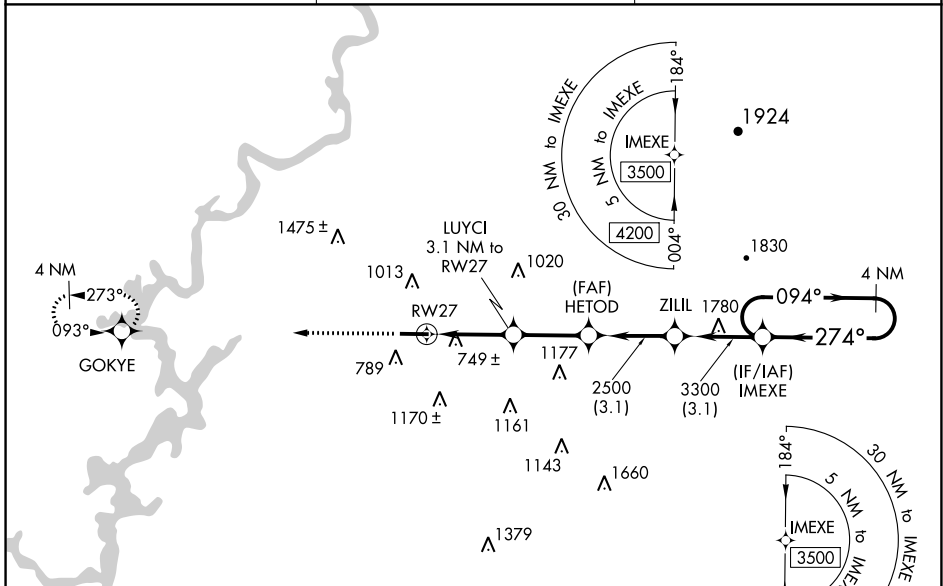
RNAV (GPS) RWY 27

MERKEL FLD SYLACAUGA MUNI (SCD)

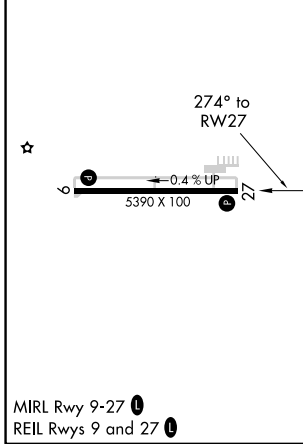
⚠ For uncompensated Baro-VNAV systems, LNAV/VNAV NA below -1.6°C (4°F) or above 48°C (118°F). Baro-VNAV and VDP NA when using Birmingham altimeter setting.
 ⚠ DME/DME RNP-0.3 NA. When local altimeter setting not received, use Birmingham altimeter setting and increase LPV DA to 889 feet, LNAV/VNAV DA to 1161 feet, and all visibilities 3/8 mile. Increase all MDA 100 feet and LNAV Cat C and D visibilities 1/4 mile.

MISSED APPROACH:
Climb to 3200 direct GOKYE and hold.

| | | |
|----------------------------|--|---------------------------------|
| AWOS-3PT 119.125 | BIRMINGHAM APP CON 123.8 256.8 | UNICOM 122.8 (CTAF) 0 |
|----------------------------|--|---------------------------------|



| | |
|----------|----------|
| ELEV 569 | TDZE 552 |
|----------|----------|



| | | | | | |
|--|-----------------------|--|--------------------------|-------------------------|---------------|
| 3200 | GOKYE | VGSI and RNAV glidepath not coincident (VGSI Angle 3.00/TCH 40). | | 4 NM Holding Pattern | |
| *LNAV only. | | LUYCI 3.1 NM to RW27 | HETOD 2500 | ZILIL 3300 | IMEXE 3500 |
| RW27 | | *1.3 NM to RW27 | *1600 | 2500 | 274° |
| 1.3 NM | | 1.8 NM | 2.7 NM | 3.1 NM | 3.1 NM |
| CATEGORY | A | B | C | D | |
| LPV DA | 802-3/4 | | 250 (300-3/4) | | |
| LNAV/VNAV DA | 1074-13/4 | | 522 (600-13/4) | | |
| LNAV MDA | 1000-1 448 (500-1) | | 1000-13/8 448 (500-13/8) | | |
| <input checked="" type="checkbox"/> CIRCLING | 1140-1 571 (600-1) | 1400-11/4 831 (900-11/4) | 1620-3 1051 (1100-3) | 1700-3 1131 (1200-3) | |

SYLACAUGA, ALABAMA
Amdt 2 15SEP16

33°10'N-86°18'W

MERKEL FLD SYLACAUGA MUNI (SCD)
RNAV (GPS) RWY 27

SE-4, 03 OCT 2024 to 31 OCT 2024

SE-4, 03 OCT 2024 to 31 OCT 2024