

NANDR TWO DEPARTURE (RNAV)

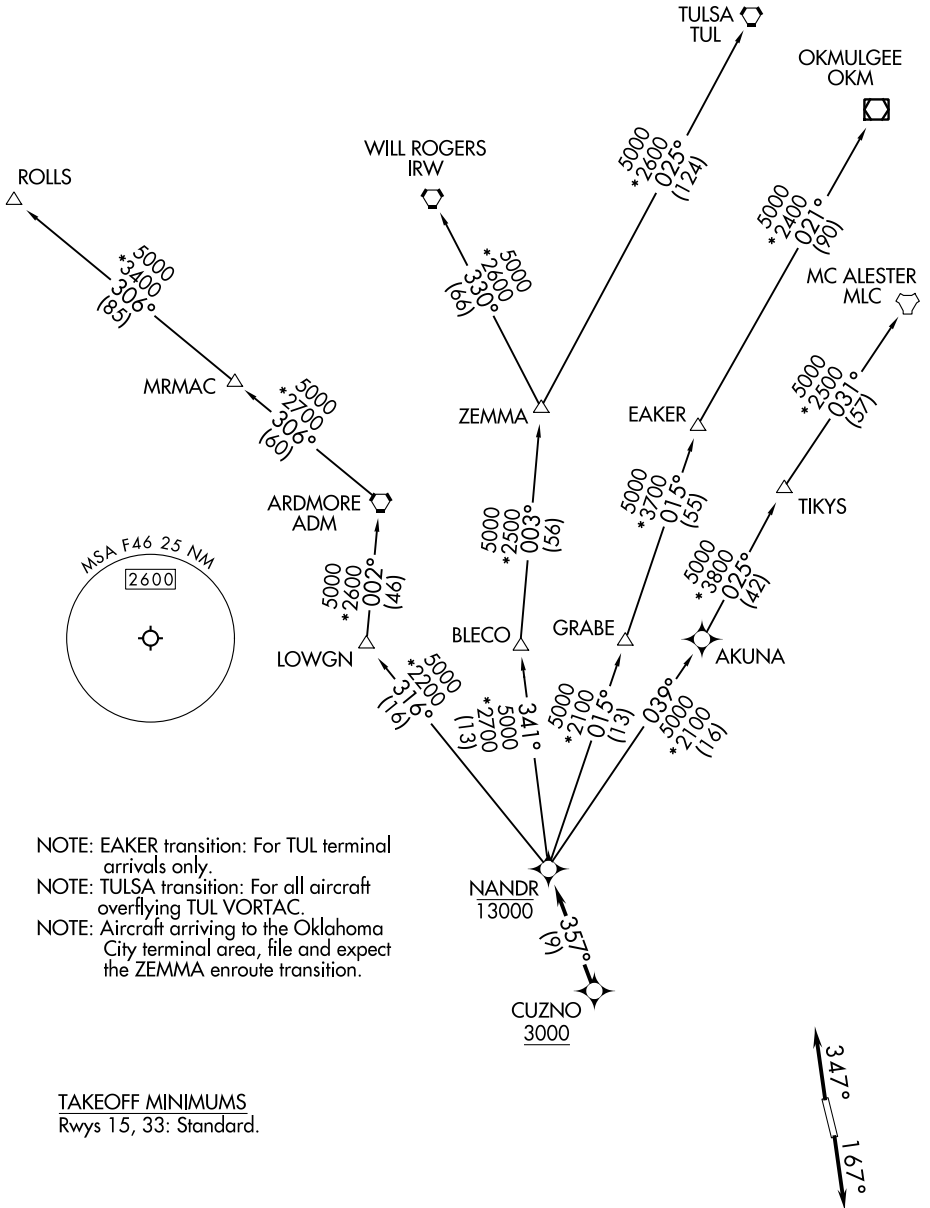
ROCKWALL, TEXAS

REGIONAL DEP CON
124.3 282.275

RNAV 1 - DME/DME/IRU or GPS.

RADAR required.

**TOP ALTITUDE:
ASSIGNED BY ATC**



SC-2, 03 OCT 2024 to 31 OCT 2024

SC-2, 03 OCT 2024 to 31 OCT 2024

NOTE: Chart not to scale.

(NARRATIVE ON FOLLOWING PAGE)