

# SWABR ONE DEPARTURE (RNAV)

CTAF  
122.8  
REGIONAL DEP CON  
124.3 282.275

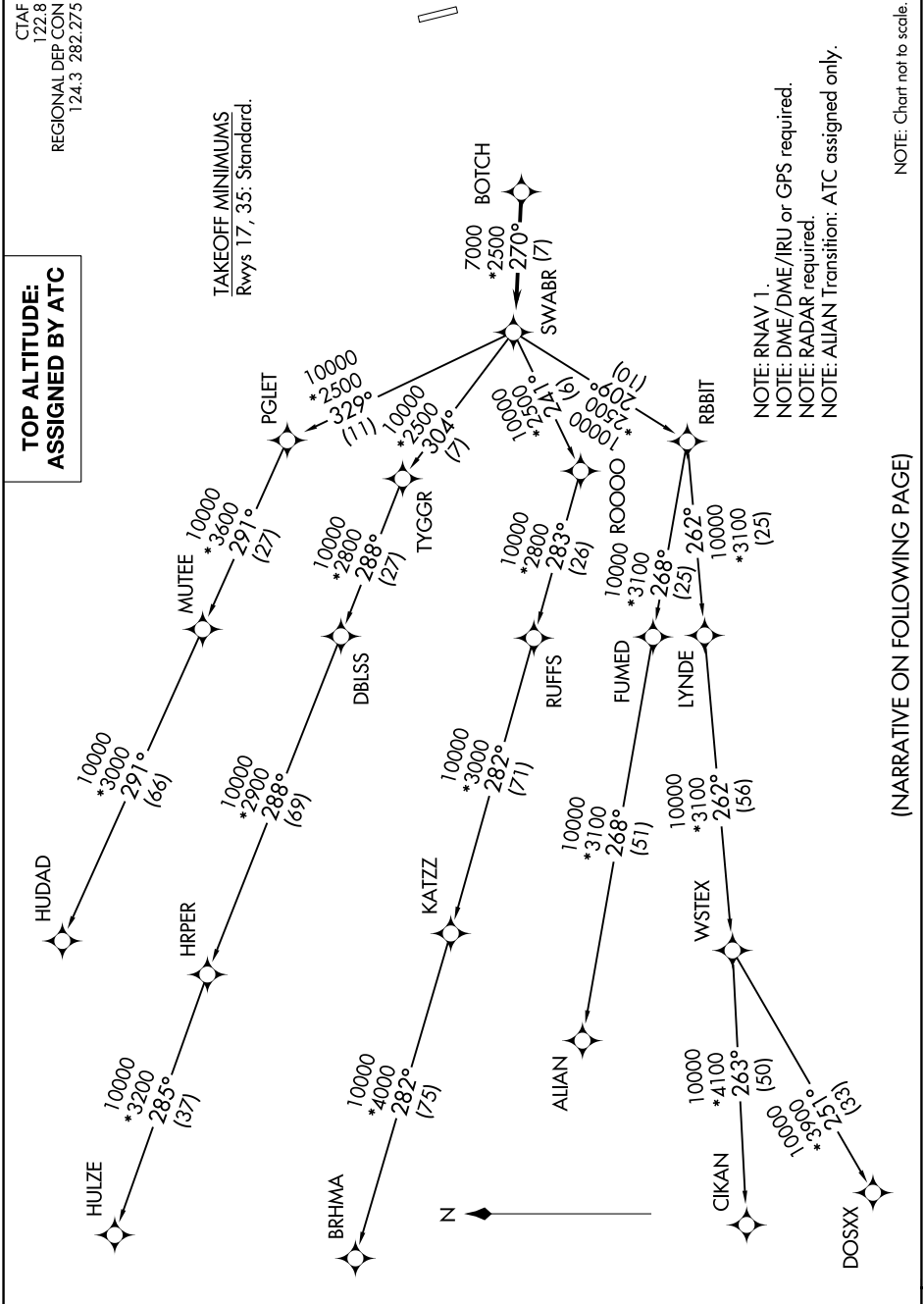
## TOP ALTITUDE: ASSIGNED BY ATC

**TAKEOFF MINIMUMS**  
Rwys 17, 35: Standard.

NOTE: RNAV 1.  
NOTE: DME/DME/IRU or GFS required.  
NOTE: RADAR required.  
NOTE: ALIAN Transition: ATC assigned only.

NOTE: Chart not to scale.

SC-2, 03 OCT 2024 to 31 OCT 2024



(NARRATIVE ON FOLLOWING PAGE)

SC-2, 03 OCT 2024 to 31 OCT 2024

# SWABR ONE DEPARTURE (RNAV)