

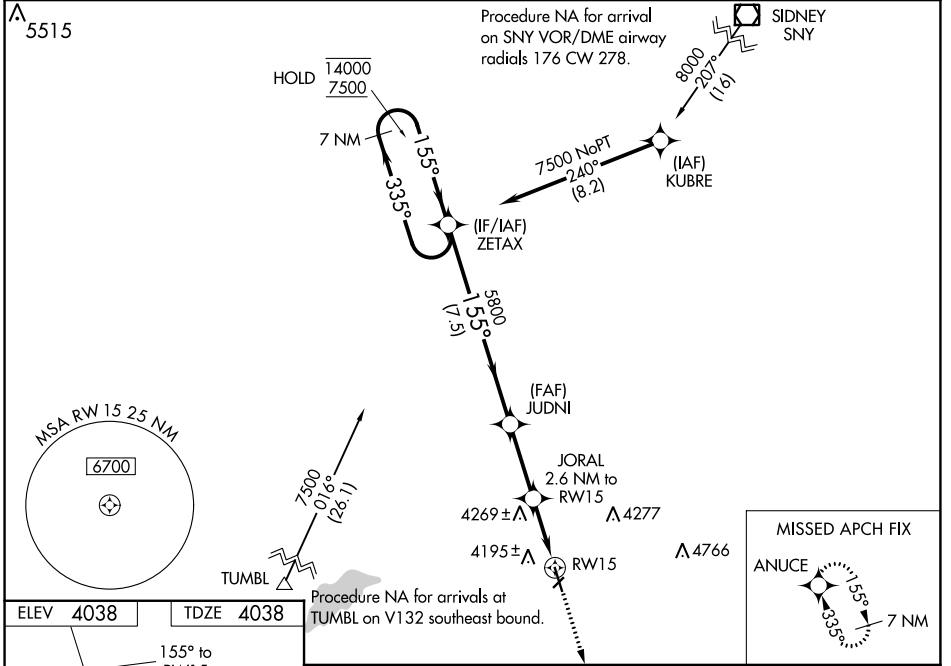
WAAS CH 56330 W15A	APP CRS 155°	Rwy Idg TDZE Apt Elev	5201 4038 4038
--	------------------------	-----------------------------	---

RNAV (GPS) RWY 15

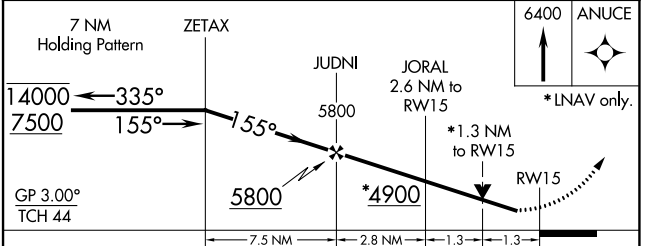
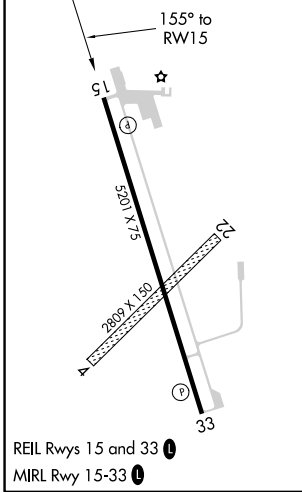
STERLING MUNI (STK)

RNP APCH.	<p>MISSED APPROACH: Climb to 6400 direct ANUCE and hold.</p>
<p>⚠ Circling NA to Rwys 4 and 22. Rwy 15 helicopter visibility reduction below 3/4 SM NA. For uncompensated Baro-VNAV systems, LNAV/VNAV NA below -22°C or above 54°C.</p>	

AWOS-3 118.525	DENVER CENTER 118.475 225.4	UNICOM 122.8 (CTAF) 📻
--------------------------	---------------------------------------	--



ELEV 4038	TDZE 4038
------------------	------------------



CATEGORY	A	B	C	D
LPV DA		4288-1	250 (300-1)	
LNAV/VNAV DA		4288-1	250 (300-1)	
LNAV MDA	4480-1	442 (500-1)	4480-1 3/8	442 (500-1 3/8)
📻 CIRCLING	4520-1 482 (500-1)	4580-1 542 (600-1)	4620-1 1/2 582 (600-1 1/2)	4720-2 1/4 682 (700-2 1/4)