

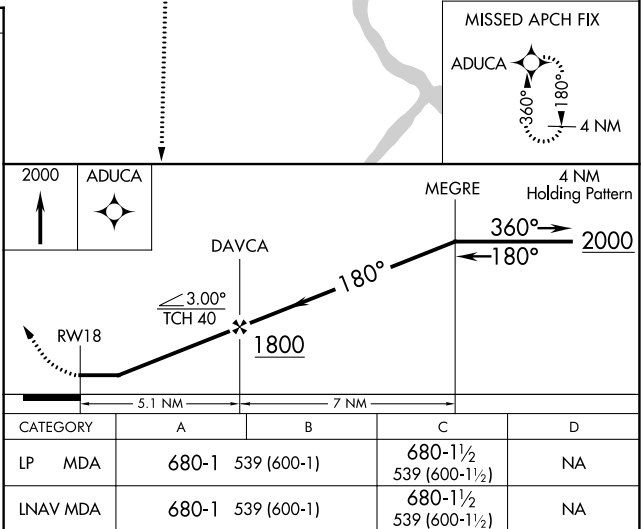
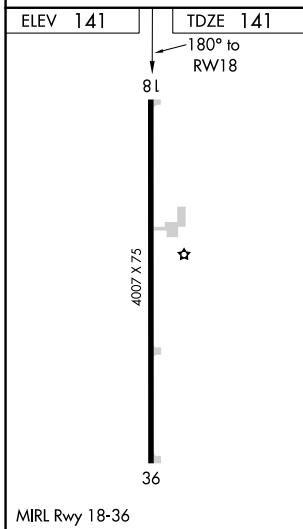
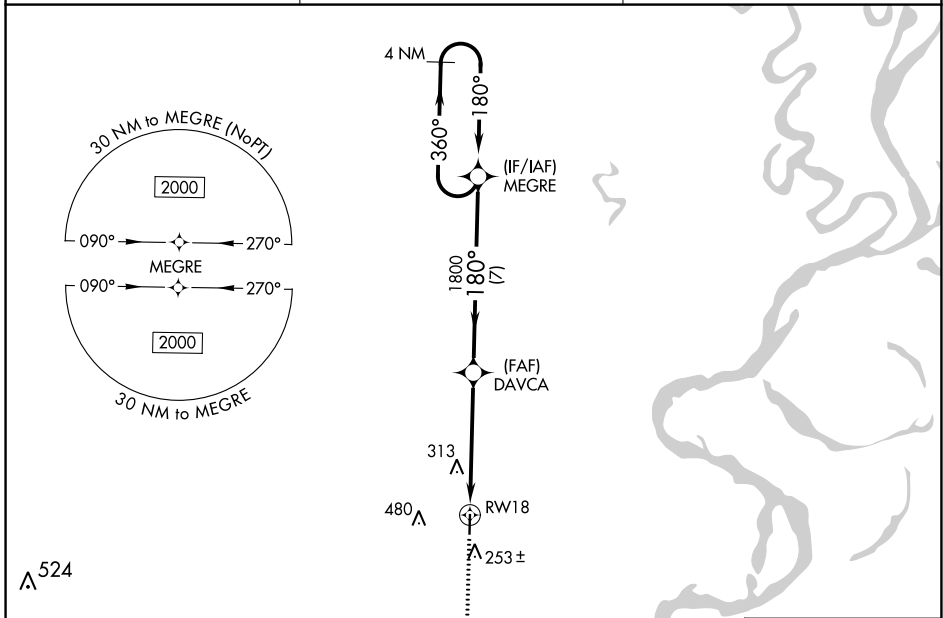
WAAS CH 86425 W18A	APP CRS 180°	Rwy Idg TDZE 141 Apt Elev 141	4007
--	------------------------	---	-------------

RNAV (GPS) RWY 18

MC GEHEE MUNI (7M1)

RNP APCH.	MISSED APPROACH: Climb to 2000 direct ADUCA and hold.
<p>▼ NA</p> <p>Rwy 18 helicopter visibility reduction below 3/4 SM NA. Use Greenville, MS altimeter setting, when not received use Monticello altimeter.</p>	

GLH ASOS 125.525	MEMPHIS CENTER 135.875 269.35	CTAF 122.9
----------------------------	---	----------------------



SC-1, 03 OCT 2024 to 31 OCT 2024

SC-1, 03 OCT 2024 to 31 OCT 2024