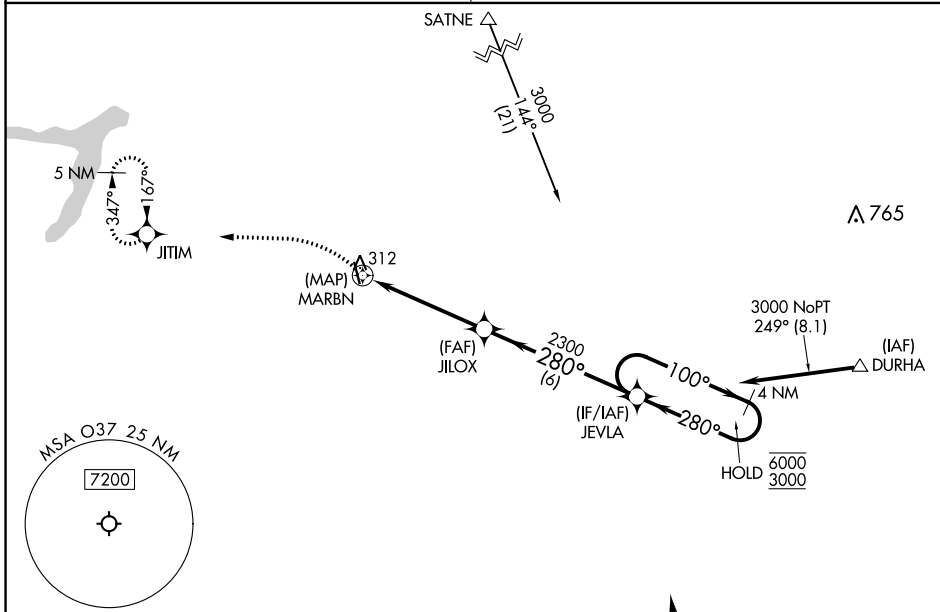


APP CRS	Rwy Idg	N/A
<b>280°</b>	TDZE	N/A
	Apt Elev	<b>218</b>

# RNAV (GPS)-A

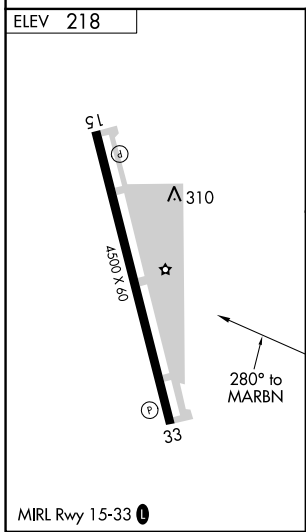
HAIGH FLD (O37)

RNP APCH.	MISSED APPROACH: Climbing left turn to 4800 direct JITIM and hold, continue climb-in-hold to 4800.
<p>▼ Use Chico altimeter setting; when not received, use Redding altimeter setting and increase all MDA 120 feet. Increase visibility Cat C and D ¼ SM.</p> <p>▲ NA</p>	
OAKLAND CENTER <b>132.2 350.3</b>	UNICOM <b>122.7(CTAF) 1</b>



SW-2, 03 OCT 2024 to 31 OCT 2024

SW-2, 03 OCT 2024 to 31 OCT 2024



Procedure NA for arrivals at TALUM on V23-195 southeast bound.

4800	JITIM	JEVLA	4 NM Holding Pattern
		JILOX	
		MARBN	
		2300	
		280°	
		100°	
		280°	
		6000	
		3000	
		4.8 NM	6 NM
CATEGORY	A	B	C
☑ CIRCLING	700-1	482 (500-1)	720-1½ 502 (600-1½)
			820-2 602 (700-2)