


|  |                        |   |             |
|--|------------------------|---|-------------|
| WAAS<br>CH <b>56310</b><br><b>W25A</b> | APP CRS<br><b>252°</b> | Rwy Idg<br>TDZE <b>860</b><br>Apt Elev <b>862</b> | <b>6005</b> |
|--|------------------------|---|-------------|

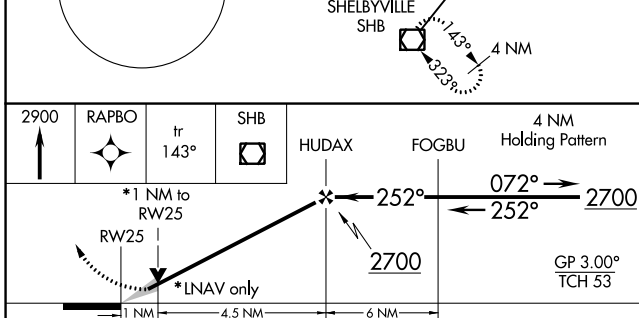
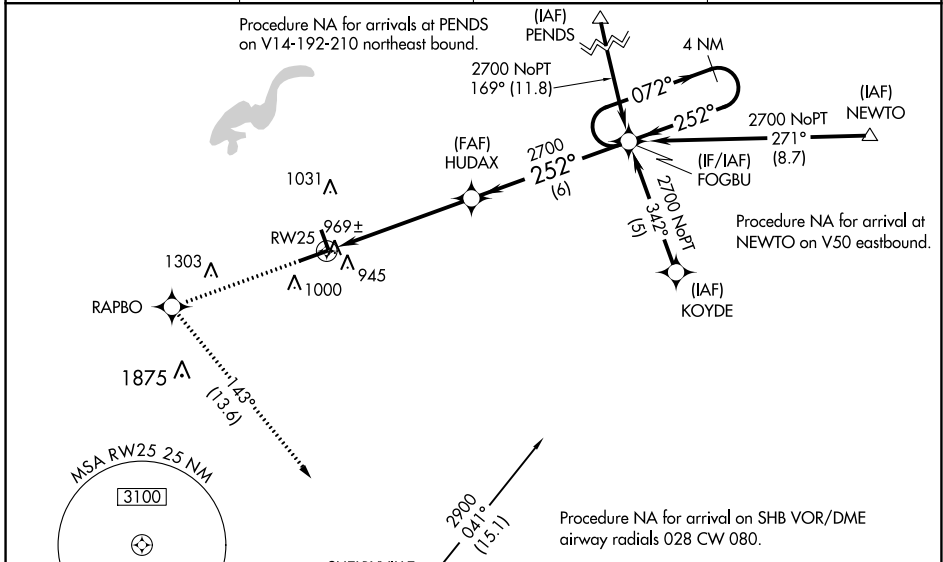
# RNAV (GPS) RWY 25

INDIANAPOLIS RGNL (MQJ)

**⚠** For uncompensated Baro-VNAV systems, LNAV/VNAV NA below -16°C (4°F) or above 54°C (130°F). Baro-VNAV and VDP NA when using Indianapolis Intl altimeter setting. DME/DME RNP-0.3 NA. When local altimeter setting not received, use Indianapolis Intl altimeter setting and increase all DA 55 feet and all MDA 60 feet, and increase all visibilities 1/2 SM. When using Indianapolis altimeter setting inoperative table does not apply. For inoperative ALS, increase LPV all Cats visibility to 1 SM.

**MALSR**  
  
**MISSED APPROACH:** Climb to 2900 direct RAPBO and on track 143° to SHB VOR/DME and hold.

|                            |   |                           |  |
|----------------------------|---|---------------------------|--|
| AWOS-3PT<br><b>124.175</b> | INDIANAPOLIS APP CON<br><b>127.15 317.8</b> | CLNC DEL<br><b>119.25</b> | UNICOM<br><b>122.975</b> (CTAF) <b>📻</b> |
|----------------------------|---|---------------------------|--|



| CATEGORY          | A                      | B        | C                      | D                      |
|-------------------|------------------------|----------|------------------------|------------------------|
| LPV DA            |                        | 1160-1/2 | 300 (300-1/2)          |                        |
| LNAV/VNAV DA      |                        | 1259-7/8 | 399 (400-7/8)          |                        |
| LNAV MDA          | 1220-1/2 360 (400-1/2) |          | 1220-5/8 360 (400-5/8) |                        |
| <b>C</b> CIRCLING | 1340-1 478 (500-1)     |          | 1360-1 498 (500-1 1/2) | 1660-2 798 (800-2 1/2) |

|          |          |
|----------|----------|
| ELEV 862 | TDZE 860 |
|----------|----------|

REIL Rwy 7 and 34  
HIRL Rwy 7-25 **📻**  
MIRL Rwy 16-34

EC-2, 03 OCT 2024 to 31 OCT 2024

EC-2, 03 OCT 2024 to 31 OCT 2024