

MILFORD, IOWA

AL-6455 (FAA)

23278

VOR/DME SPW <b>115.15</b> Chan <b>98</b> (Y)	APP CRS <b>005°</b>	Rwy Idg TDZE Apt Elev <b>N/A</b> <b>N/A</b> <b>1439</b>
--	------------------------	--

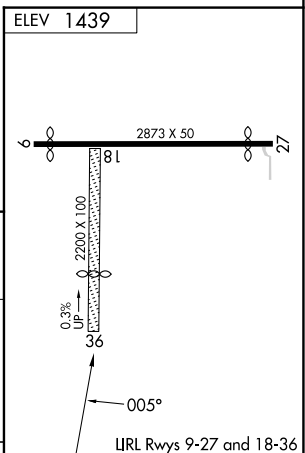
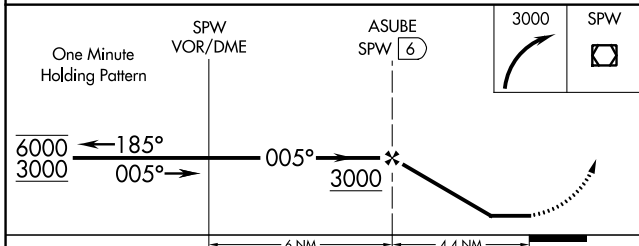
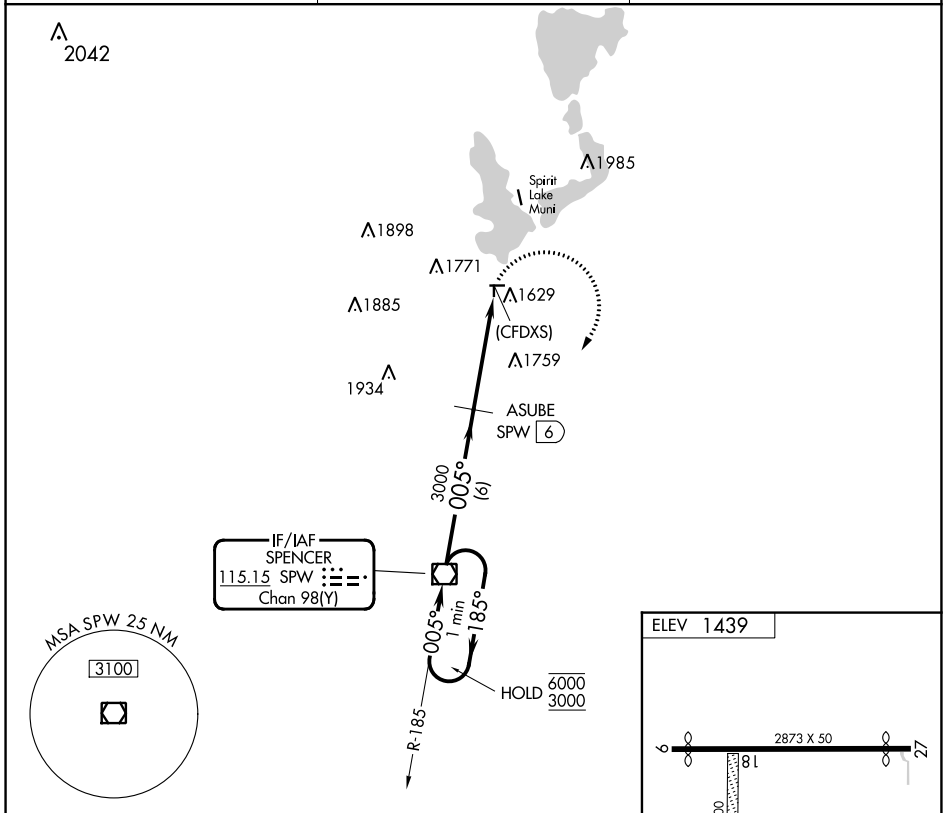
**VOR-A**  
FULLER(4D8)

DME required. RADAR required for procedure entry.

**NA** Circling NA to Rwy 18 and 36. Procedure NA at night. Use Spencer altimeter setting, when not received, use Estherville altimeter setting and increase all MDA 40 feet.

MISSED APPROACH: Climbing right turn to 3000 direct SPW VOR/DME and hold.

SPW ASOS <b>126.625</b>	MINNEAPOLIS CENTER <b>127.75 257.7</b>	CTAF <b>122.9</b>
----------------------------	---	----------------------



CATEGORY	A	B	C	D	FAF to MAP 4.4 NM					
<b>C</b> CIRCLING	2100-1 661 (700-1)		NA		Knots	60	90	120	150	180
					Min:Sec	4:24	2:56	2:12	1:46	1:28

MILFORD, IOWA  
Amdt 1 03JAN19

43°20'N-95°10'W

FULLER(4D8)  
**VOR-A**

NC-3, 03 OCT 2024 to 31 OCT 2024

NC-3, 03 OCT 2024 to 31 OCT 2024