

APP CRS <b>147°</b>	Rwy Idg TDZE Apt Elev	<b>N/A</b> <b>N/A</b> <b>61</b>
------------------------	-----------------------------	---------------------------------------

# RNAV (GPS)-A

JACKSON COUNTY (26R)

RNP APCH.

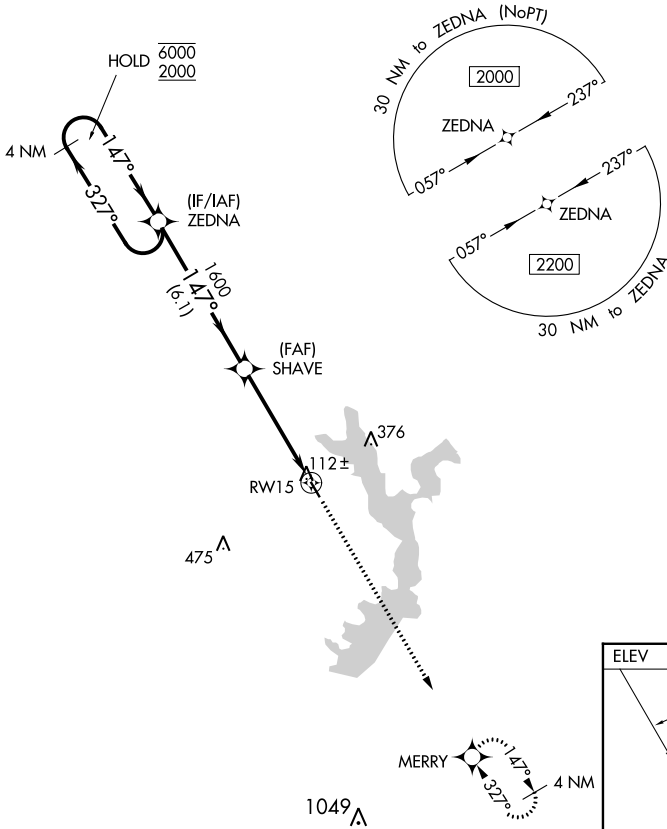
**▼** Use Victoria altimeter setting; when not received, use Port Lavaca altimeter setting.  
**▲** NA

MISSED APPROACH: Climb to 2200 direct MERRY and hold.

VCT ASOS  
**119.025**

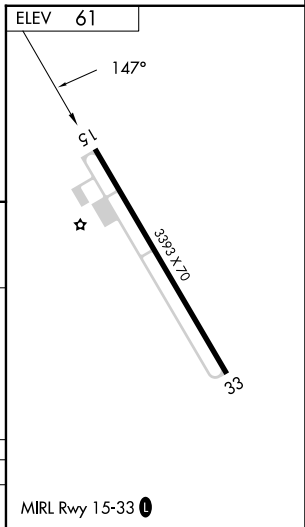
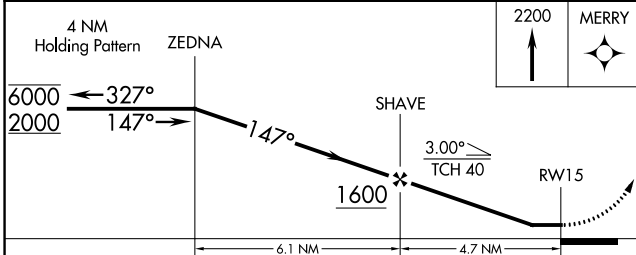
HOUSTON CENTER  
**135.05 353.6**

UNICOM  
**122.8 (CTAF) 0**



SC-5, 03 OCT 2024 to 31 OCT 2024

SC-5, 03 OCT 2024 to 31 OCT 2024



CATEGORY	A	B	C	D
<b>C</b> CIRCLING	640-1	579 (600-1)	NA	NA

MIRL Rwy 15-33 0