

WAAS CH <b>99325</b> <b>W22A</b>	APP CRS <b>220°</b>	Rwy Idg <b>5007</b> TDZE <b>69</b> Apt Elev <b>70</b>
--	------------------------	---

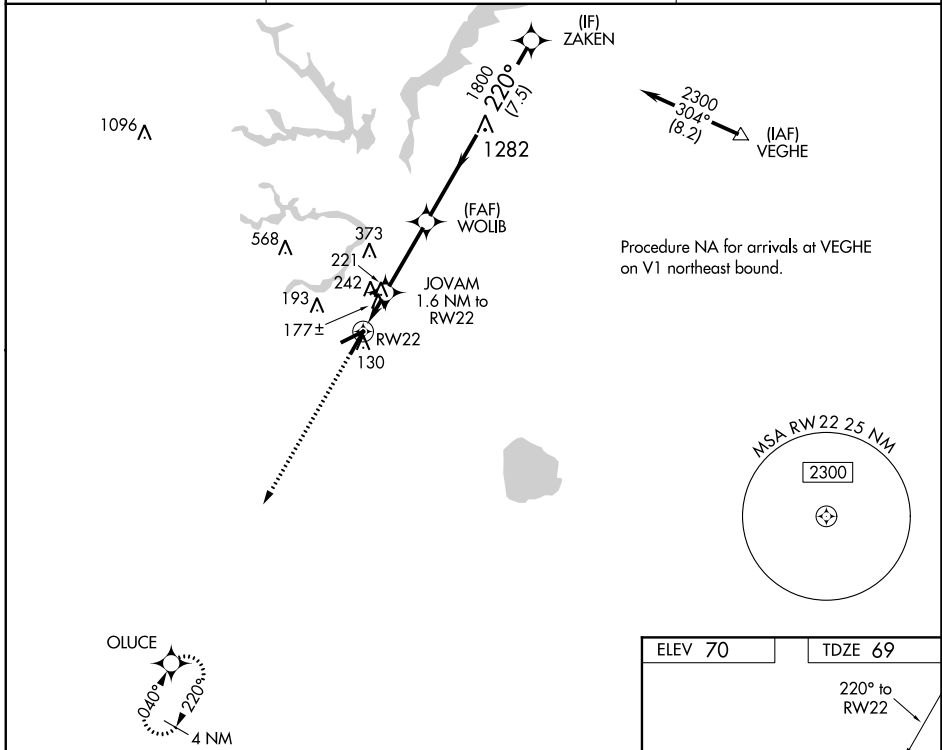
# RNAV (GPS) RWY 22

SUFFOLK EXEC (SF'Q)

**⚠** DME/DME RNP-0.3 NA. Helicopter visibility reduction below 3/4 SM NA. VDP NA with Norfolk Intl altimeter setting. When local altimeter setting not received, use Norfolk Intl altimeter setting and increase all MDA 60 feet, and increase LP Cats C and D visibility 1/4 mile and LNAV Cats C and D visibility 1/8 mile.

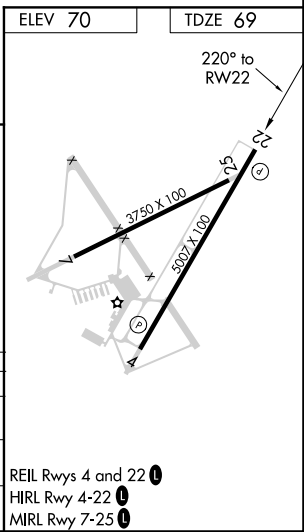
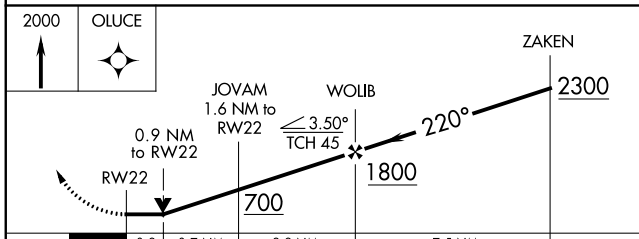
MISSED APPROACH:  
Climb to 2000 direct  
OLUCE and hold.

AWOS-3 <b>119.375</b>	NORFOLK APP CON <b>127.9 269.425</b>	UNICOM <b>122.7 (CTAF)</b>
--------------------------	---	-------------------------------



NE-3, 03 OCT 2024 to 31 OCT 2024

NE-3, 03 OCT 2024 to 31 OCT 2024



CATEGORY	A	B	C	D
LP MDA	440-1		371 (400-1)	
LNAV MDA	500-1	431 (500-1)	500-1 1/4	431 (500-1 1/4)
<b>C</b> CIRCLING	500-1 430 (500-1)	560-1 490 (500-1)	680-1 3/4 610 (700-1 3/4)	680-2 610 (700-2)

REIL Rws 4 and 22  
HIRL Rwy 4-22  
MIRL Rwy 7-25