

LOC I-HNZ <b>109.75</b>	APP CRS <b>060°</b>	Rwy Idg TDZE Apt Elev	<b>5501</b> <b>526</b> <b>526</b>
----------------------------	------------------------	-----------------------------	---

# LOC RWY 6

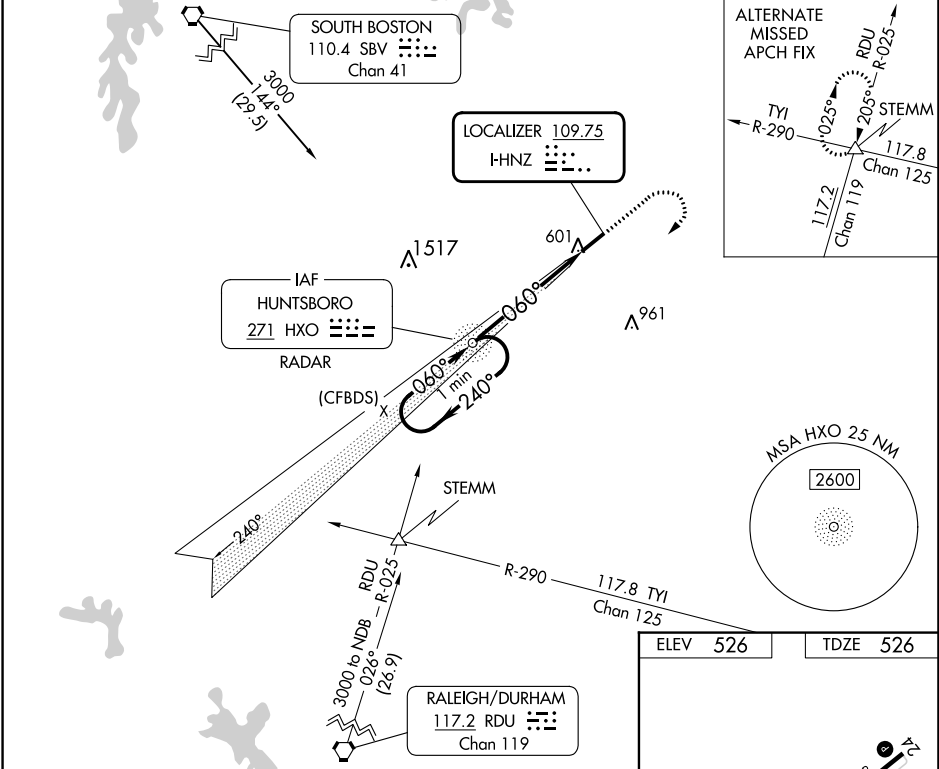
HENDERSON/OXFORD (HNZ)

ADF or RADAR required. ADF or RADAR required for procedure entry.

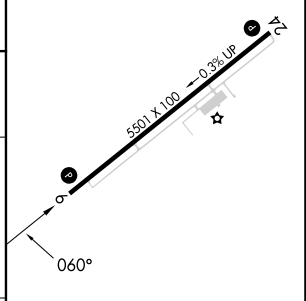
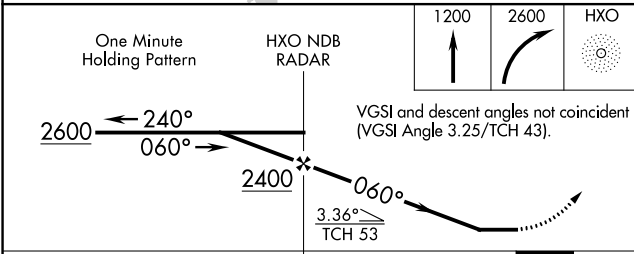
▼ Rwy 6 helicopter visibility reduction below ¼ SM NA. When local altimeter setting not received, use Roxboro altimeter setting and increase all MDA 80 feet; increase S-6 Cat C/D visibility ½ SM and Circling Cat C and D visibility ¼ SM.

MISSED APPROACH: Climb to 1200 then climbing right turn to 2600 direct HXO NDB/RADAR and hold.

AWOS-3 <b>118.625</b>	RALEIGH APP CON <b>132.35 256.9</b>	UNICOM <b>122.8 (CTAF) 0</b>
--------------------------	--	---------------------------------



ELEV 526	TDZE 526
----------	----------



CATEGORY	A	B	C	D	REIL Rwy 6 0 MIRL Rwy 6-24 0												
S-6	980-1	454 (500-1)	980-1 3/8	454 (500-1 3/8)		FAF to MAP 5.2 NM											
<b>C</b> CIRCLING	980-1	454 (500-1)	1100-1 1/2 574 (600-1 1/2)	1280-2 1/2 754 (800-2 1/2)	<table border="1"> <tr> <td>Knots</td> <td>60</td> <td>90</td> <td>120</td> <td>150</td> <td>180</td> </tr> <tr> <td>Min:Sec</td> <td>5:12</td> <td>3:28</td> <td>2:36</td> <td>2:05</td> <td>1:44</td> </tr> </table>	Knots	60	90	120	150	180	Min:Sec	5:12	3:28	2:36	2:05	1:44
Knots	60	90	120	150	180												
Min:Sec	5:12	3:28	2:36	2:05	1:44												

SE-2, 03 OCT 2024 to 31 OCT 2024

SE-2, 03 OCT 2024 to 31 OCT 2024