

WAAS CH 63009 W24A	APP CRS 240°	Rwy Idg 5501 TDZE 523 Apt Elev 526
--	------------------------	---

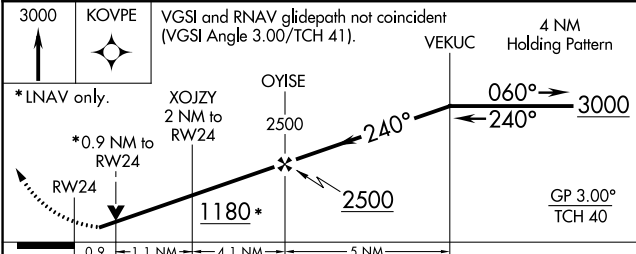
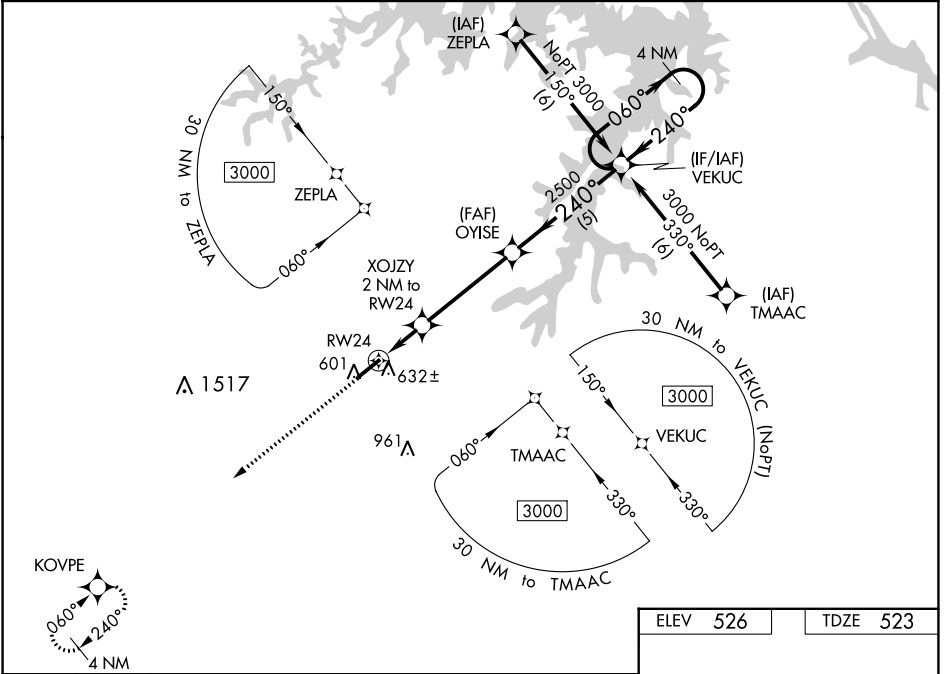
RNAV (GPS) RWY 24

HENDERSON/OXFORD (HNZ)

▼ For uncompensated Baro-VNAV systems, LNAV/VNAV NA below -16°C (4°F) or above 54°C (130°F).
▲ DME/DME RNP-0.3 NA. When local altimeter setting not received, use Roxboro altimeter setting and increase all DA 64 feet, and all MDA 80 feet; increase LPV all Cats visibility 1/8 mile, LNAV/VNAV all Cats and Circling Cats C and D visibility 1/4 mile, and LNAV Cats C and D 3/8 mile. Helicopter visibility reduction below 3/4 SM NA. Baro-VNAV and VDP NA when using Roxboro altimeter setting.

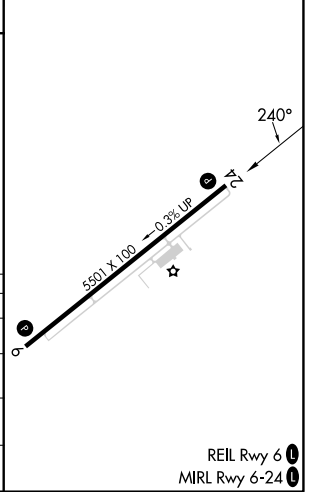
MISSED APPROACH:
Climb to 3000 direct KOVPE and hold.

AWOS-3 118.625	RALEIGH APP CON 132.35 256.9	UNICOM 122.8(CTAF)
--------------------------	--	------------------------------



ELEV 526	TDZE 523
----------	----------

CATEGORY	A	B	C	D
LPV DA		773-7/8	250 (300-7/8)	
LNAV/VNAV DA		813-1	290 (300-1)	
LNAV MDA		900-1	377 (400-1)	
C CIRCLING	960-1 434 (500-1)	980-1 454 (500-1)	1100-1½ 574 (600-1½)	1280-2½ 754 (800-2½)



SE-2, 03 OCT 2024 to 31 OCT 2024

SE-2, 03 OCT 2024 to 31 OCT 2024