

# HI-ILS W or LOC W RWY 13

LOC/DME I-NOG <b>110.5</b> Chan 42	APCH CRS <b>130°</b>	Rwy Ildg TDZE Arprt Elev	<b>8001</b> <b>257</b> <b>257</b>
--	-------------------------	--------------------------------	---

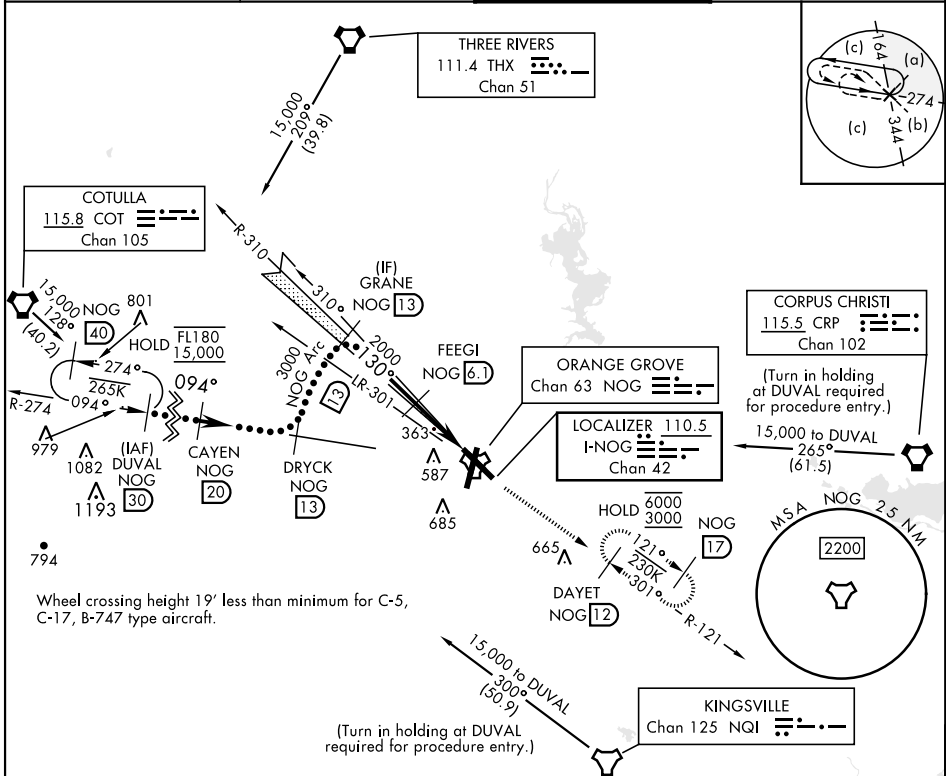
[USN]

ORANGE GROVE NALF (KNOG)

TACAN required

MISSED APPROACH: Climb to 700 then climbing to 3000 intercept NOG TACAN R-121 to DAYET and hold.

ATIS ★ <b>254.35</b>	KINGSVILLE APP CON <b>119.90 290.45</b>	TOWER ★ <b>128.4 281.425</b>	GND CON <b>229.4</b>
-------------------------	--	---------------------------------	-------------------------



Wheel crossing height 19' less than minimum for C-5, C-17, B-747 type aircraft.

(Turn in holding at DUVAL required for procedure entry.)

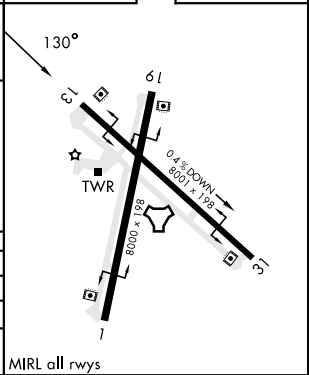
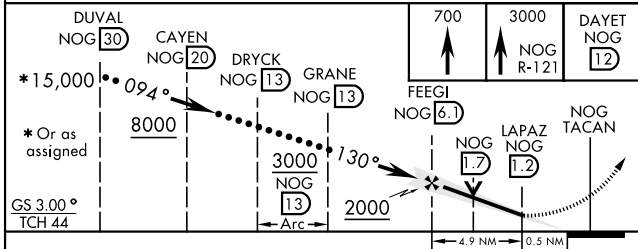
CORPUS CHRISTI  
115.5 CRP  
Chan 102

(Turn in holding at DUVAL required for procedure entry.)  
15,000 to DUVAL  
(61.5)



EMERG SAFE ALT 100 NM 16,200

ELEV 257	TDZE 257
----------	----------



CATEGORY	C	D	E
S-ILS 13	457-1	200 (200-1)	
S-LOC 13	620-1	363 (400-1)	
CIRCLING	920-1¾ 663 (700-1¾)	1000-2½ 743 (800-2½)	1000-2¾ 743 (800-2¾)

# HI-ILS W or LOC W RWY 13

SC-3, 03 OCT 2024 to 31 OCT 2024

SC-3, 03 OCT 2024 to 31 OCT 2024