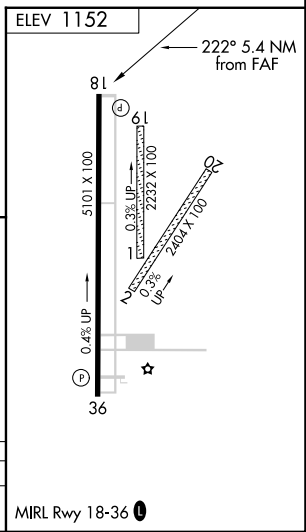
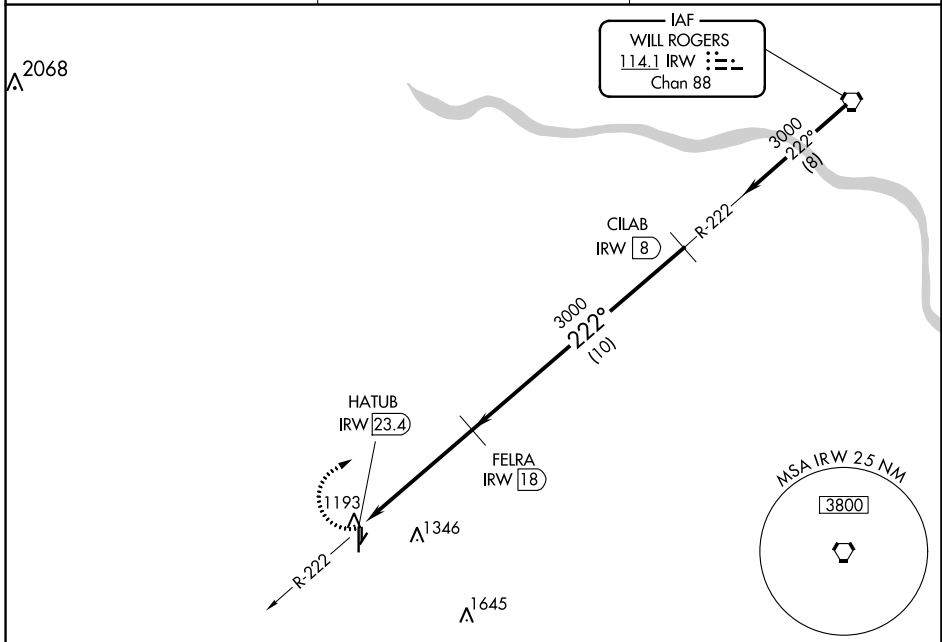


VORTAC IRW 114.1 Chan 88	APP CRS 222°	Rwy Idg TDZE Apt Elev	N/A N/A 1152
--	------------------------	-----------------------------	---

VOR/DME-A
CHICKASHA MUNI (CHK)

<p>▽ If local altimeter not received; use Oklahoma City/Will Rogers World altimeter setting and increase all MDAs 80 feet. Circling NA to Rws 1, 2, 19 and 20.</p>	<p>MISSED APPROACH: Climbing right turn to 3000 direct IRW VORTAC.</p>	
<p>AWOS-3 118.175</p>	<p>OKE CITY APP CON 124.6 266.8</p>	<p>UNICOM 123.0 (CTAF) 0</p>



3000	IRW	FELRA IRW 18	CILAB IRW 8	
HATUB IRW 23.4			Procedure Turn NA	
5.4 NM		10 NM		
CATEGORY	A	B	C	D
0 CIRCLING	1660-1 508 (600-1)	1660-1¼ 508 (600-1¼)	1700-1½ 548 (600-1½)	NA

SC-1, 03 OCT 2024 to 31 OCT 2024

SC-1, 03 OCT 2024 to 31 OCT 2024