

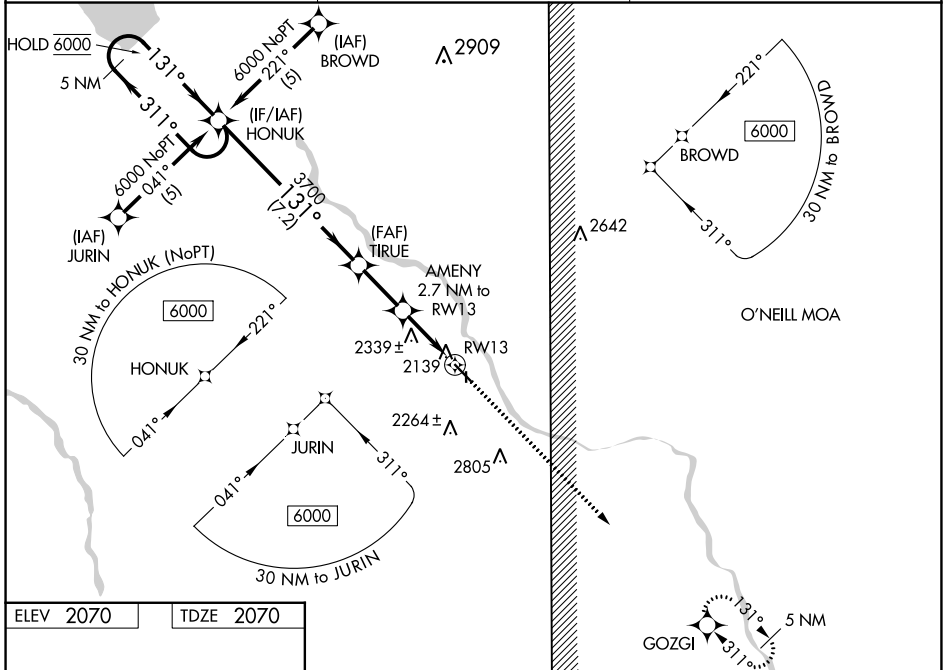
WAAS CH <b>90312</b> <b>W13A</b>	APP CRS <b>131°</b>	Rwy Idg TDZE Apt Elev	<b>4721</b> <b>2070</b> <b>2070</b>
--	------------------------	-----------------------------	---

# RNAV (GPS) RWY 13

EVELYN SHARP FLD (ODX)

RNP APCH.	MISSED APPROACH: Climb to 6000 direct GOZGI and hold, continue climb-in-hold to 6000.
<p><b>⚠</b> Circling NA to Rwy 17 and 35. Rwy 13 helicopter visibility reduction below 3/4 SM NA. For uncompensated Baro-VNAV systems, LNAV/VNAV NA below -23°C or above 54°C.</p>	

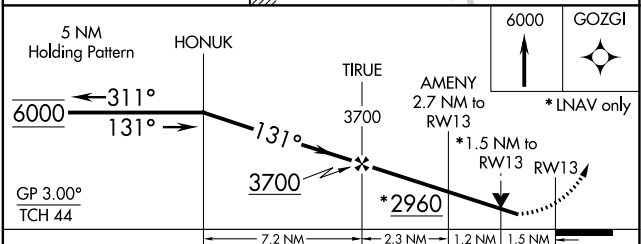
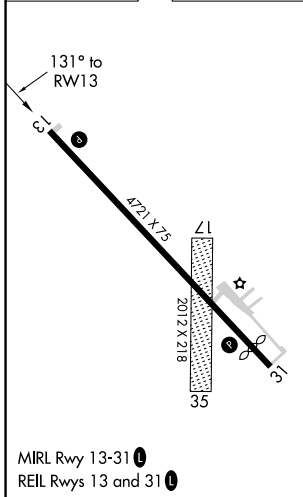
ASOS <b>119.925</b>	MINNEAPOLIS CENTER <b>119.4 278.8</b>	UNICOM <b>122.8 (CTAF) 0</b>
------------------------	--	---------------------------------



NC-2, 03 OCT 2024 to 31 OCT 2024

NC-2, 03 OCT 2024 to 31 OCT 2024

ELEV 2070	TDZE 2070
-----------	-----------



CATEGORY	A	B	C	D
LPV DA	2376-1	306 (400-1)		NA
LNAV/VNAV DA	2670-1 <sup>3</sup> / <sub>4</sub>	600 (600-1 <sup>3</sup> / <sub>4</sub> )		NA
LNAV MDA	2600-1	530 (600-1)		NA
<b>C</b> CIRCLING	2680-1	610 (700-1)		NA