

APP CRS Rwy Idg **5000**
 TDZE **3730**
 Apt Elev **3730**
141°

RNAV (GPS) RWY 14

HOLYOKE (HEQ)

RNP APCH - GPS.

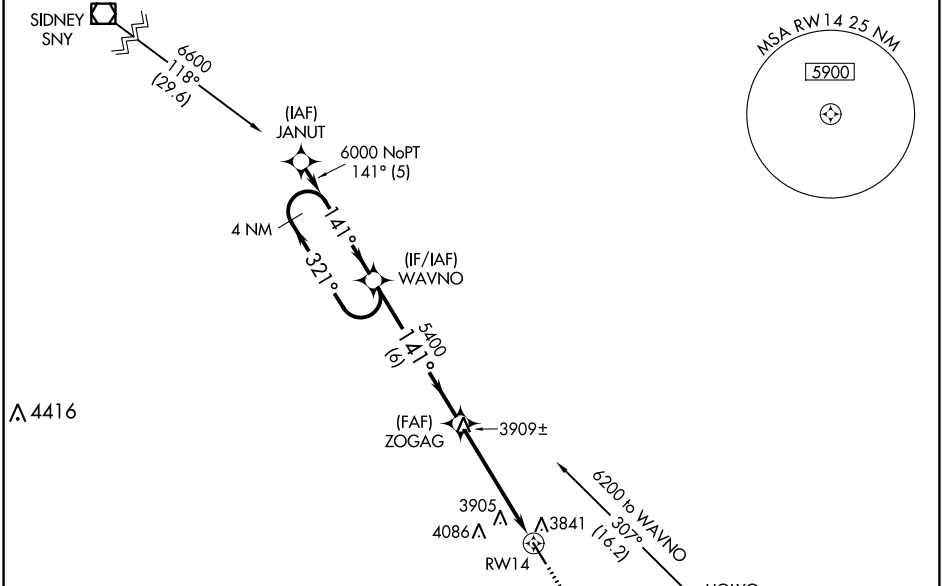
▼ When local altimeter setting not received, use Sidney Muni/Lloyd W Carr
 ▲ NA Fld altimeter setting: increase all MDAs 200 feet and increase visibility LNAV
 Cats C and D ½ SM and Circling Cats C and D ¾ SM. VDP NA when
 using Sidney Muni/Lloyd W Carr Fld altimeter setting.

MISSED APPROACH: Climb to 6500
 direct YOSUS and via 131° track to
 ASHBY and hold.

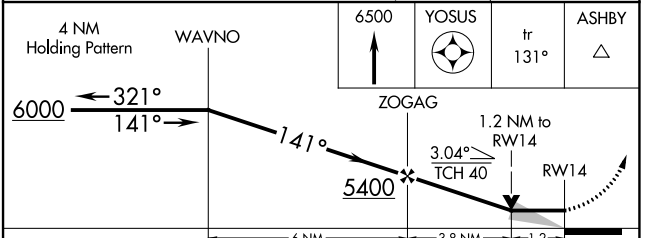
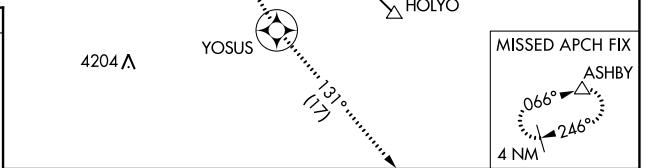
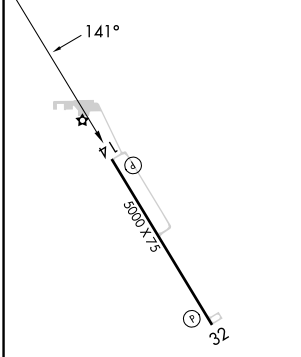
AWOS-3
119.275

DENVER CENTER
118.475 225.4

UNICOM
122.7 (CTAF) 0



ELEV 3730 TDZE 3730



CATEGORY	A	B	C	D
LNAV MDA	4160-1	430 (500-1)	4160-1 ¼	430 (500-1 ¼)
CIRCLING	4200-1 470 (500-1)	4240-1 510 (600-1)	4400-1 ¾ 670 (700-1 ¾)	4400-2 670 (700-2)

MIRL Rwy 14-32 0
 REIL Rwy 14 and 32 0

HOLYOKE, COLORADO
 Orig-H 03NOV22

40°34'N-102°16'W

RNAV (GPS) RWY 14

SW-1, 03 OCT 2024 to 31 OCT 2024

SW-1, 03 OCT 2024 to 31 OCT 2024