

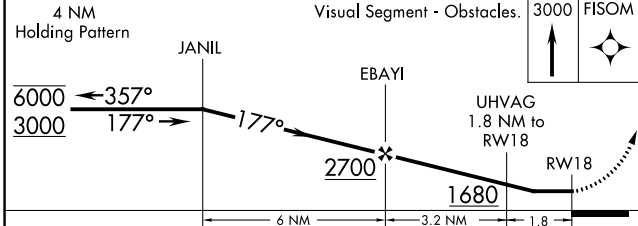
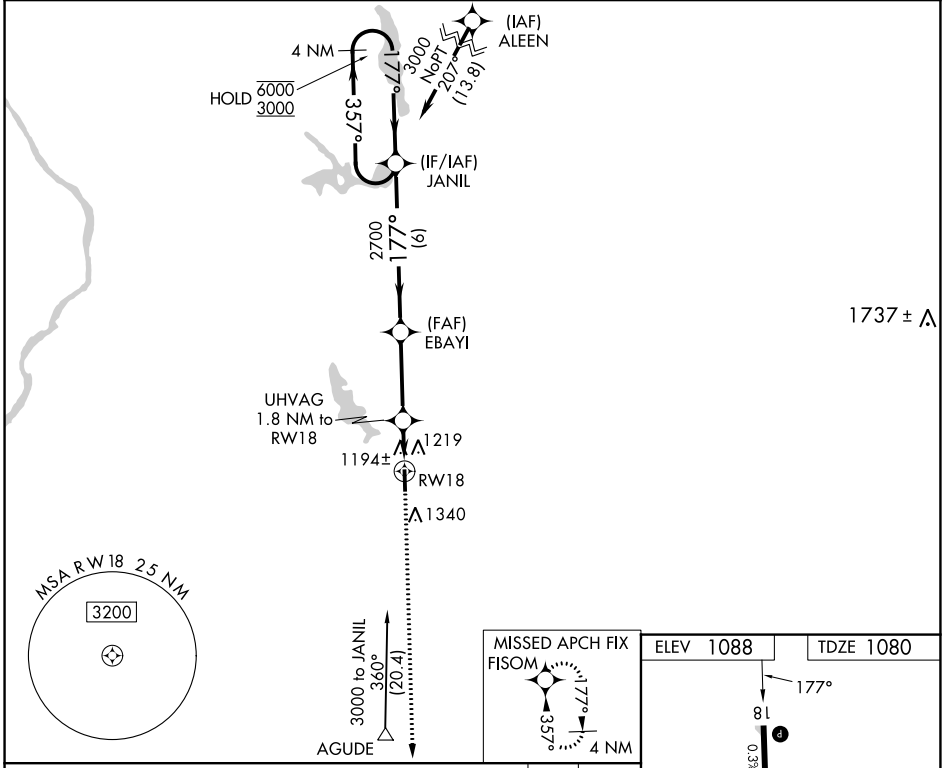
WAAS CH <b>77732</b> <b>W18A</b>	APP CRS <b>177°</b>	Rwy Idg TDZE Apt Elev	<b>4000</b> <b>1080</b> <b>1088</b>
--	------------------------	-----------------------------	---

# RNAV (GPS) RWY 18

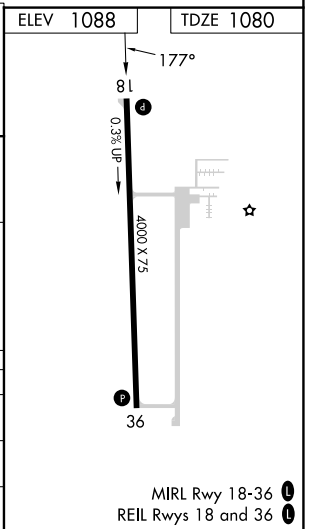
AMERY MUNI (AHH)

RNP APCH.	Rwy 18 helicopter visibility reduction below 3/4 SM NA. Use New Richmond altimeter setting; when not received, use Osceola altimeter setting and increase all MDAs 20 feet and Circling Cat C visibility 1/4 SM.	MISSED APPROACH: Climb to 3000 direct FISOM and hold.
-----------	--	--

RNH AWOS-3 <b>120.0</b>	MINNEAPOLIS CENTER <b>125.3 335.6</b>	UNICOM <b>122.8 (CTAF) 0</b>
----------------------------	--	---------------------------------



CATEGORY	A	B	C	D
LP MDA	1500-1	420 (500-1)	1500-1¼ 420 (500-1¼)	NA
LNAV MDA	1600-1	520 (600-1)	1600-1½ 520 (600-1½)	NA
CIRCLING	1740-1	652 (700-1)	1740-1¾ 652 (700-1¾)	NA



EC-3, 03 OCT 2024 to 31 OCT 2024

EC-3, 03 OCT 2024 to 31 OCT 2024