

LOC/DME I-RIL 110.9 Chan 46	APP CRS 258°	Rwy ldg TDZE Apt Elev 5537	N/A N/A 5537
---	------------------------	--	---

LOC-A

RIFLE GARFIELD COUNTY (RIL)

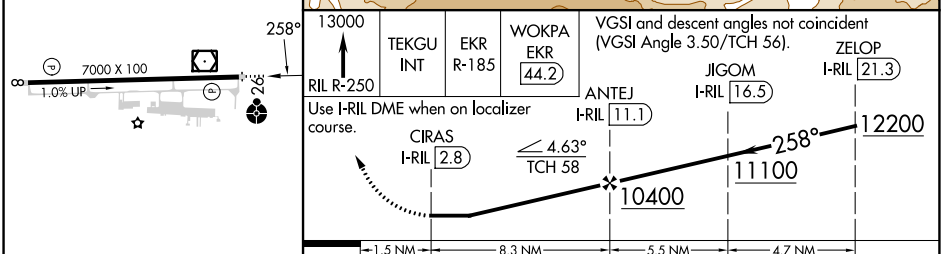
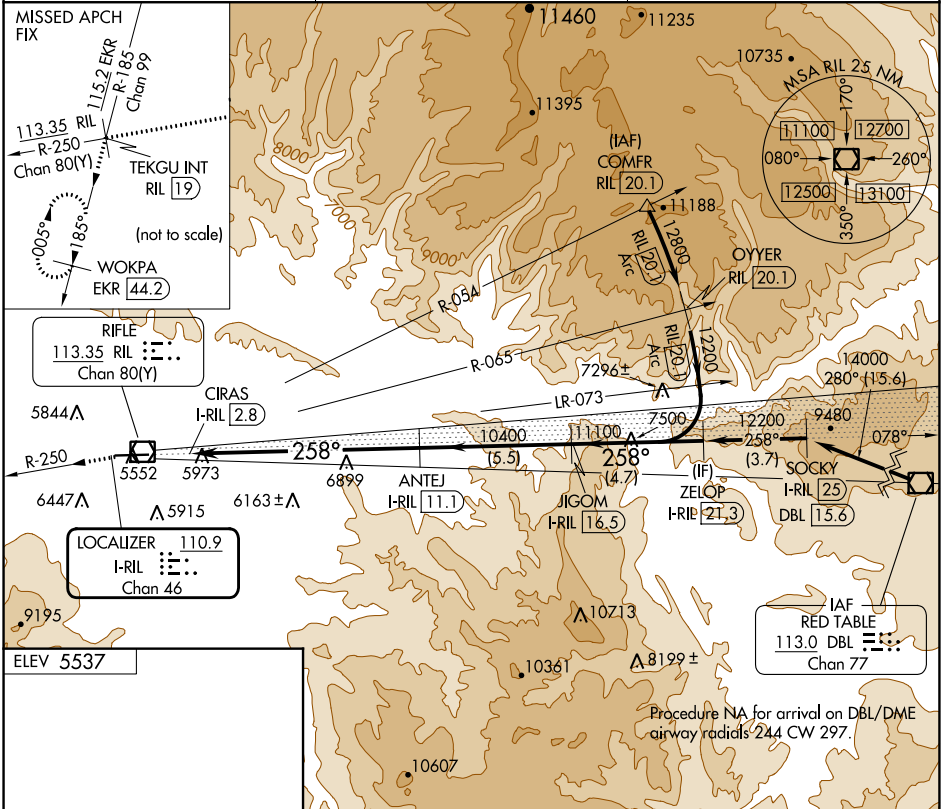
DME required.

⚠ Circling NA south of Rwy 8-26 at night. Rwy 26 helicopter visibility reduction below $\frac{3}{4}$ SM NA.

❄ -14°C

MISSED APPROACH: Climb to 13000 on RIL VOR/DME R-250 to TEKGU INT/RIL 19 DME and on EKR VOR/DME R-185 to WOKPA/EKR 44.2 DME and hold.

ASOS 135.275	DENVER CENTER 134.95 327.075	UNICOM 122.8 (CTAF) 0
------------------------	--	---------------------------------



CATEGORY	A	B	C	D
C CIRCLING	7920-1 $\frac{3}{4}$	2383 (2400-1 $\frac{3}{4}$)	7920-3 2383 (2400-3)	NA

RIFLE, COLORADO
Amdt 10 16MAY24

39°32'N-107°44'W

LOC-A

RIFLE GARFIELD COUNTY (RIL)

SW-1, 03 OCT 2024 to 31 OCT 2024

SW-1, 03 OCT 2024 to 31 OCT 2024