

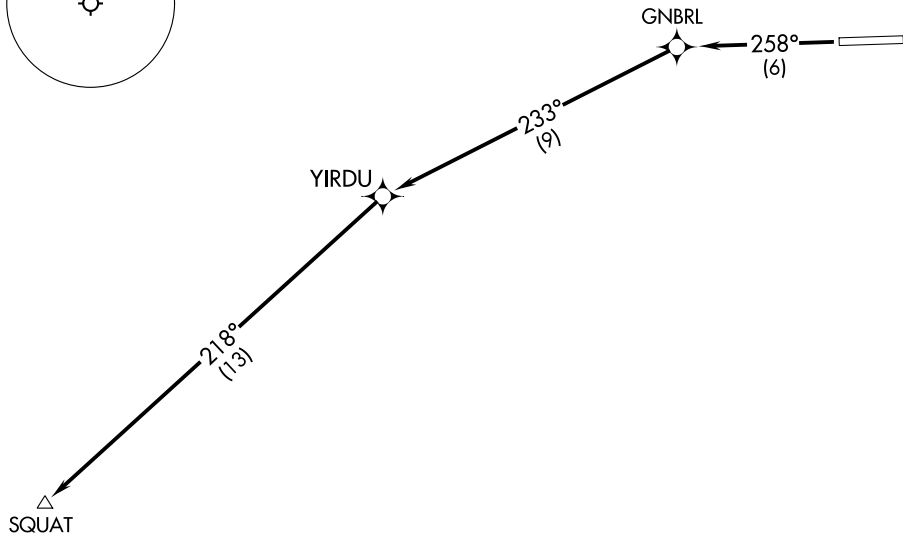
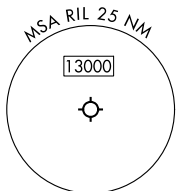
(SQUAT5.SQUAT) 23166

SQUAT FIVE DEPARTURE (OBSTACLE) (RNAV)

RIFLE GARFIELD COUNTY (R.I.L.)
AL-6741 (FAA) RIFLE, COLORADO

DENVER CENTER
134.95 327.075

RNAV 1 - GPS



TAKEOFF MINIMUMS

Rwy 26: Standard with minimum climb of 431' per NM to 9800.

TAKEOFF OBSTACLE NOTES

Rwy 26: Vehicles on road 37' from DER, 267' left of centerline, up to 5481' MSL.

Pole 1419' from DER, 615' left of centerline, 5507' MSL.

Transmission line and pole beginning 1502' from DER, 701' left of centerline, up to 129' AGL/5559' MSL.

NOTE: Chart not to scale.

DEPARTURE ROUTE DESCRIPTION

TAKEOFF RUNWAY 26: Climb on course 258° to GNBRL, then on track 233° to YIRDU, then on track 218° to SQUAT, maintain 10600 or as assigned.

SQUAT FIVE DEPARTURE (OBSTACLE) (RNAV)

(SQUAT5.SQUAT) 15JUN23

RIFLE, COLORADO
RIFLE GARFIELD COUNTY (R.I.L.)

SW-1, 03 OCT 2024 to 31 OCT 2024

SW-1, 03 OCT 2024 to 31 OCT 2024