

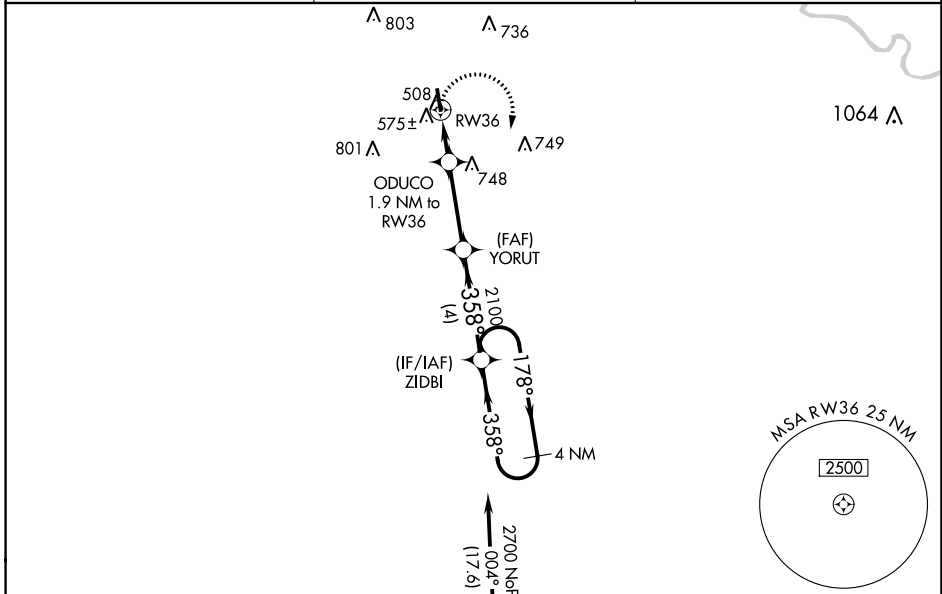
WAAS CH 40326 W36A	APP CRS 358°	Rwy Idg 4335 TDZE 452 Apt Elev 452
--	------------------------	---

RNAV (GPS) RWY 36

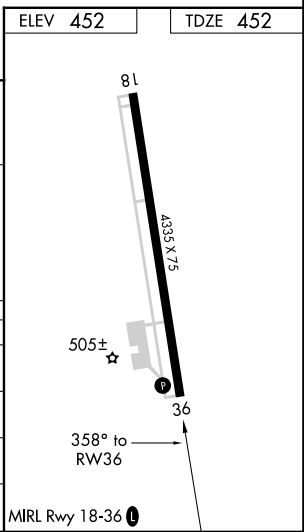
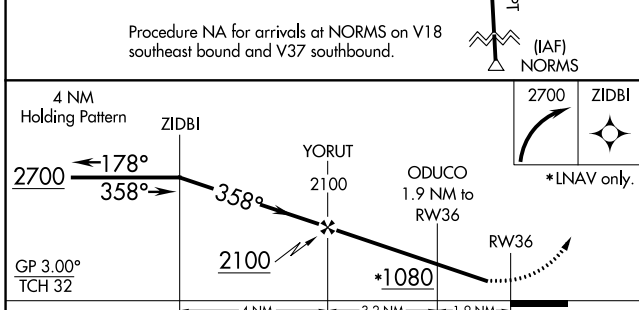
LEXINGTON COUNTY (6J0)

RNP APCH.	Baro-VNAV NA. Rwy 36 helicopter visibility reduction below 3/4 SM NA. Use Columbia Metro altimeter setting; when not received use Jim Hamilton L B Owens altimeter setting and increase all DA 19 feet, all MDA 20 feet and increase LPV and LNAV/VNAV all Cats visibility 1/2 mile.	MISSED APPROACH: Climbing right turn to 2700 direct ZIDBI and hold.
-----------	--	---

CAE ASOS 120.15	COLUMBIA APP CON 124.15 338.2	UNICOM 123.0 (CTAF)
---------------------------	---	-------------------------------



Procedure NA for arrivals at NORMS on V18 southeast bound and V37 southbound.



CATEGORY	A	B	C	D
LPV DA	757-1	305 (400-1)		NA
LNAV/VNAV DA	793-1 1/8	341 (400-1 1/8)		NA
LNAV MDA	880-1	428 (500-1)		NA
CIRCLING	980-1 528 (600-1)	1060-1 608 (700-1)		NA

SE-2, 03 OCT 2024 to 31 OCT 2024

SE-2, 03 OCT 2024 to 31 OCT 2024