

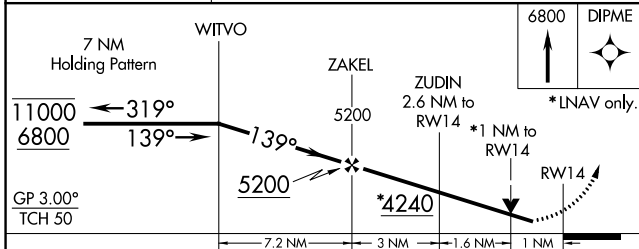
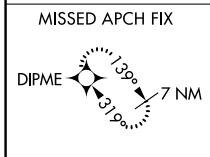
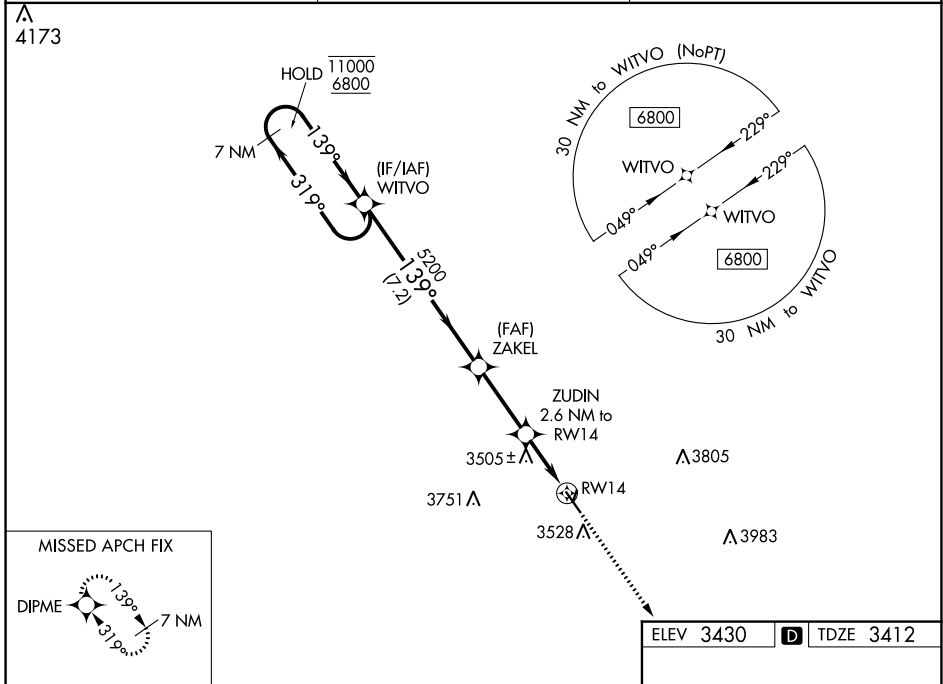
WAAS CH <b>77942</b> <b>W14A</b>	APP CRS <b>139°</b>	Rwy Idg TDZE Apt Elev	<b>5000</b> <b>3412</b> <b>3430</b>
--	------------------------	-----------------------------	---

# RNAV (GPS) RWY 14

CHEYENNE COUNTY MUNI (SYF)

RNP APCH.	MISSED APPROACH: Climb to 6800 direct DIPME and hold, continue climb-in-hold to 6800.
-----------	---

AWOS-3 <b>118,925</b>	DENVER CENTER <b>132.7 226,675</b>	UNICOM <b>122.8 (CTAF) ①</b>
--------------------------	---------------------------------------	---------------------------------



ELEV 3430	TDZE 3412
MIRL Rwy 14-32 ①	

CATEGORY	A	B	C	D
LPV DA	3662-1	250 (300-1)		NA
LNAV/VNAV DA	3662-1	250 (300-1)		NA
LNAV MDA	3760-1	348 (400-1)		NA
CIRCLING	3860-1 430 (500-1)	3880-1 450 (500-1)	3900-1½ 470 (500-1½)	NA

NC-2, 03 OCT 2024 to 31 OCT 2024

NC-2, 03 OCT 2024 to 31 OCT 2024