

APP CRS	Rwy Idg	4501
268°	TDZE	241
	Apt Elev	241

RNAV (GPS) RWY 27

CARLISLE MUNI (4M3)

RNP APCH-GPS.

▼ Procedure NA at night. Rwy 27 helicopter visibility reduction below 1 SM NA.
▲ When local altimeter setting not received, use Stuttgart altimeter setting.

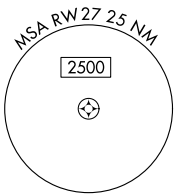
MISSED APPROACH: Climb to 2500 direct CIVAY and hold.

AWOS-2
119.275

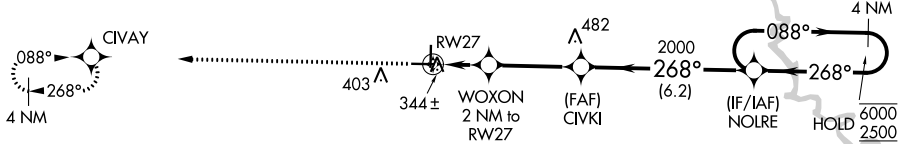
LITTLE ROCK APP CON
135.4 353.6

CLNC DEL
135.4

UNICOM
122.8 (CTAF) 1



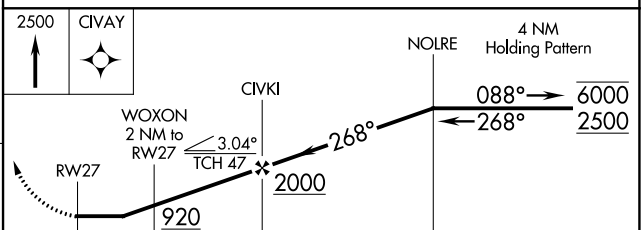
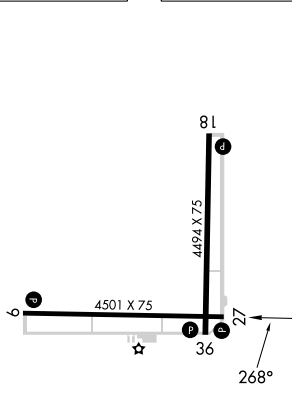
▲ 933



SC-1, 03 OCT 2024 to 31 OCT 2024

SC-1, 03 OCT 2024 to 31 OCT 2024

ELEV 241 TDZE 241



CATEGORY	A	B	C	D
LNAV MDA	640-1	399 (400-1)	NA	