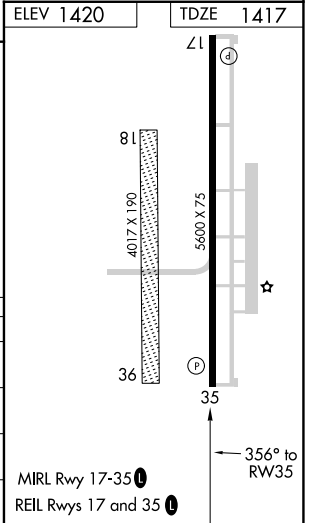
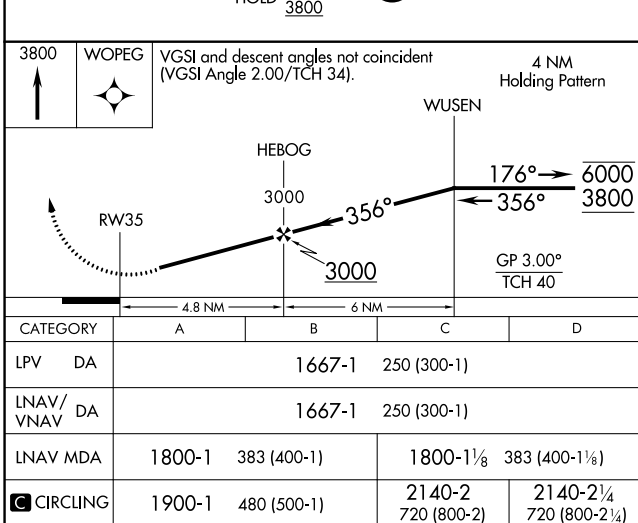
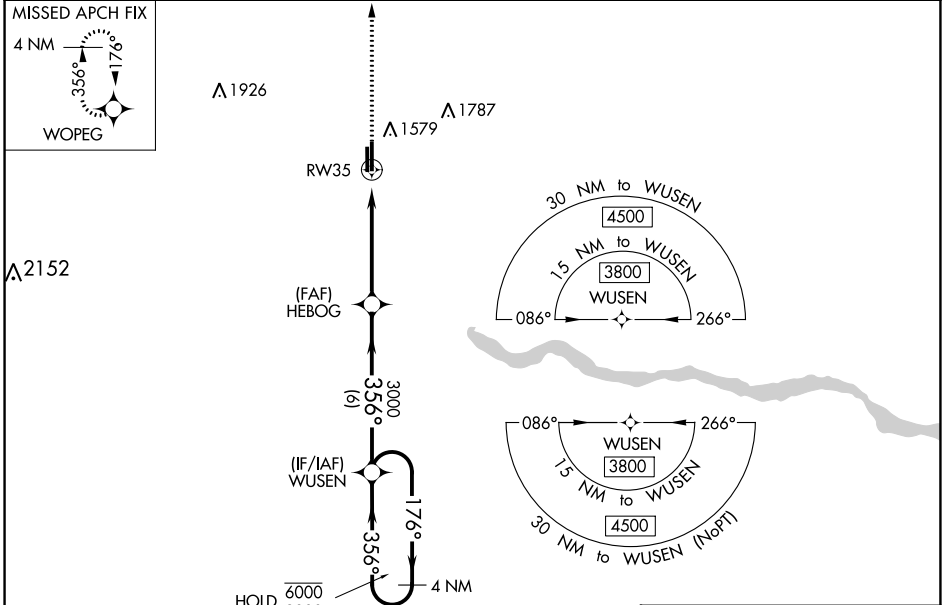


WAAS CH <b>97443</b> <b>W35A</b>	APP CRS <b>356°</b>	Rwy Idg <b>5600</b> TDZE <b>1417</b> Apt Elev <b>1420</b>
--	------------------------	---

# RNAV (GPS) RWY 35

EL RENO RGNL (RQO)

RNP APCH.		MISSED APPROACH: Climb to 3800 direct WOPEG and hold.
<p>▼ Rwy 35 helicopter visibility reduction below 1 SM NA. Straight-in Rwy 35 NA at night, Circling Rwy 35 NA at night. For uncompensated Baro-VNAV systems, LNAV/VNAV NA below -17°C or above 54°C. Circling NA to Rwy 18 and 36.</p>		
AWOS-3 <b>118.475</b>	OKE CITY APP CON <b>124.6 266.8</b>	UNICOM <b>122.8 (CTAF) 0</b>



SC-1, 03 OCT 2024 to 31 OCT 2024

SC-1, 03 OCT 2024 to 31 OCT 2024