

WAAS CH <b>78202</b> <b>W11A</b>	APP CRS <b>110°</b>	Rwy Idg TDZE Apt Elev	<b>5000</b> <b>2537</b> <b>2537</b>
--	------------------------	-----------------------------	---

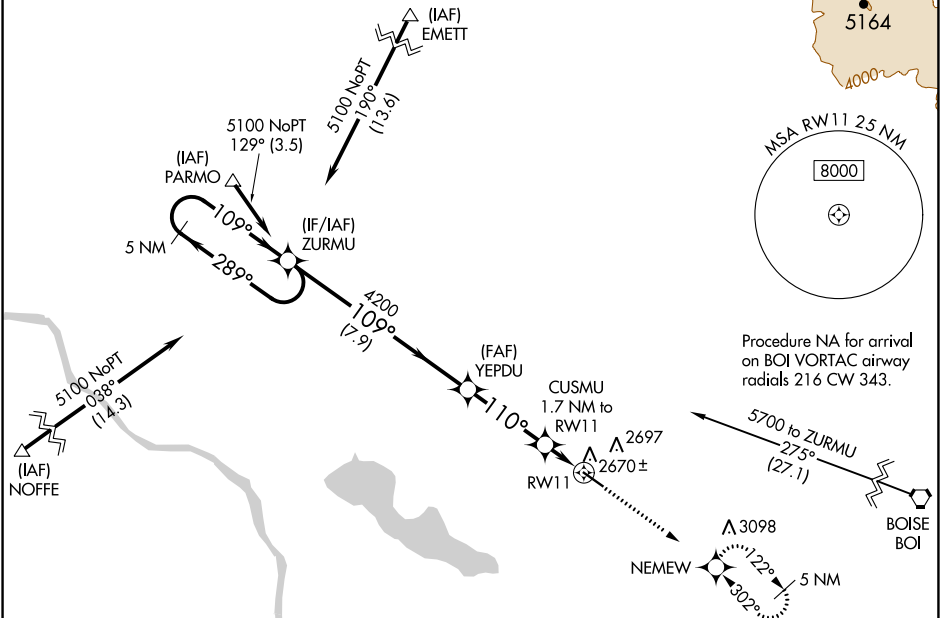
# RNAV (GPS) RWY 11

NAMPA MUNI (MAN)

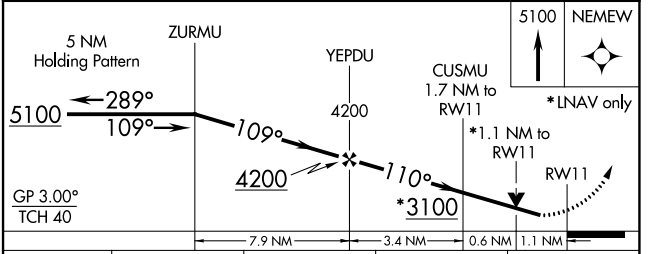
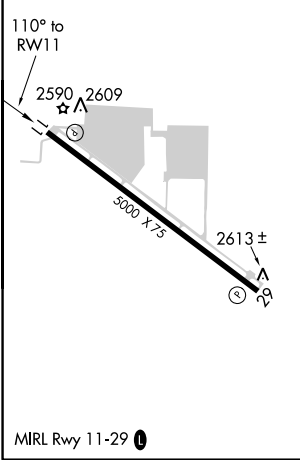
**⚠** For uncompensated Baro-VNAV systems, LNAV/VNAV NA below -20°C (-4°F) or above 54°C (130°F). When Circling to Rwy 29 at night, operational VGSI required, remain on or above VGSI glidepath until threshold. DME/DME RNP-0.3 NA. Rwy 11 helicopter visibility reduction below ¾ SM NA.

MISSED APPROACH: Climb to 5100 direct NEMEW and hold, continue climb-in-hold to 5100.

AWOS-3 <b>118.325</b>	BIG SKY APP CON <b>119.6 269.4</b>	UNICOM <b>122.7 (CTAF) 0</b>
--------------------------	---------------------------------------	---------------------------------



ELEV 2537	TDZE 2537
-----------	-----------



CATEGORY	A	B	C	D
LPV DA	2787-7/8 250 (300-7/8)			
LNAV/VNAV DA	2851-1 314 (400-1)			
LNAV MDA	2920-1	383 (400-1)	2920-1 1/8	383 (400-1 1/8)
<b>C</b> CIRCLING	3060-1	523 (600-1)	3100-1 1/2 563 (600-1 1/2)	3220-2 1/4 683 (700-2 1/4)

NW-1, 03 OCT 2024 to 31 OCT 2024

NW-1, 03 OCT 2024 to 31 OCT 2024