

APP CRS	Rwy Idg	2998
239°	TDZE	5
	Apt Elev	5

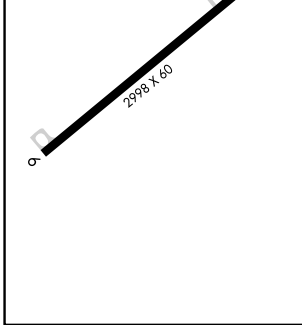
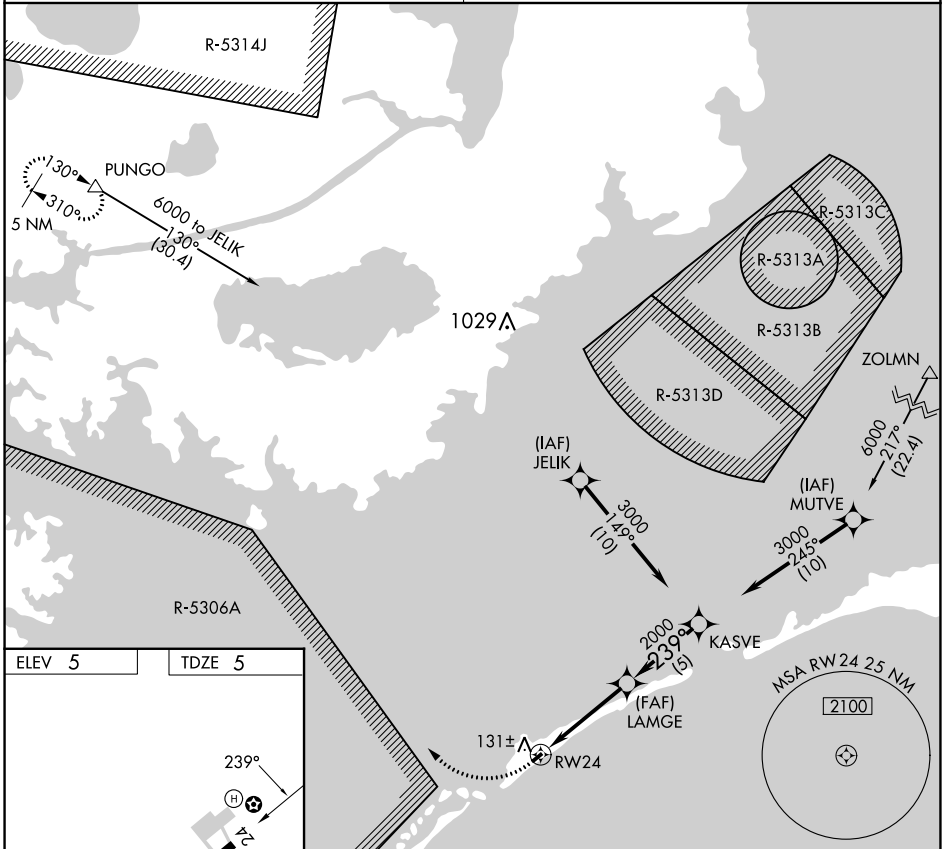
RNAV (GPS) RWY 24

OCRACOKE ISLAND (W95)

▲ NA Procedure NA at night. Use Hatteras altimeter setting, when not received procedure NA. DME/DME RNP-0.3 NA. Helicopter visibility reduction below 1 SM NA.

MISSED APPROACH: Climbing right turn to 6000 direct PUNGO WP and hold.

CHERRY POINT APP CON	CTAF
119.75 360.775	122.9



6000	PUNGO	△			
			LAMGE	KASVE	
			2000	3000	
			6 NM	5 NM	
			3.07°		
			TCH 40		
					Procedure Turn NA
CATEGORY	A	B	C	D	
LNAV MDA	500-1	495 (500-1)		NA	
CIRCLING	560-1	555 (600-1)		NA	

SE-2, 03 OCT 2024 to 31 OCT 2024

SE-2, 03 OCT 2024 to 31 OCT 2024