

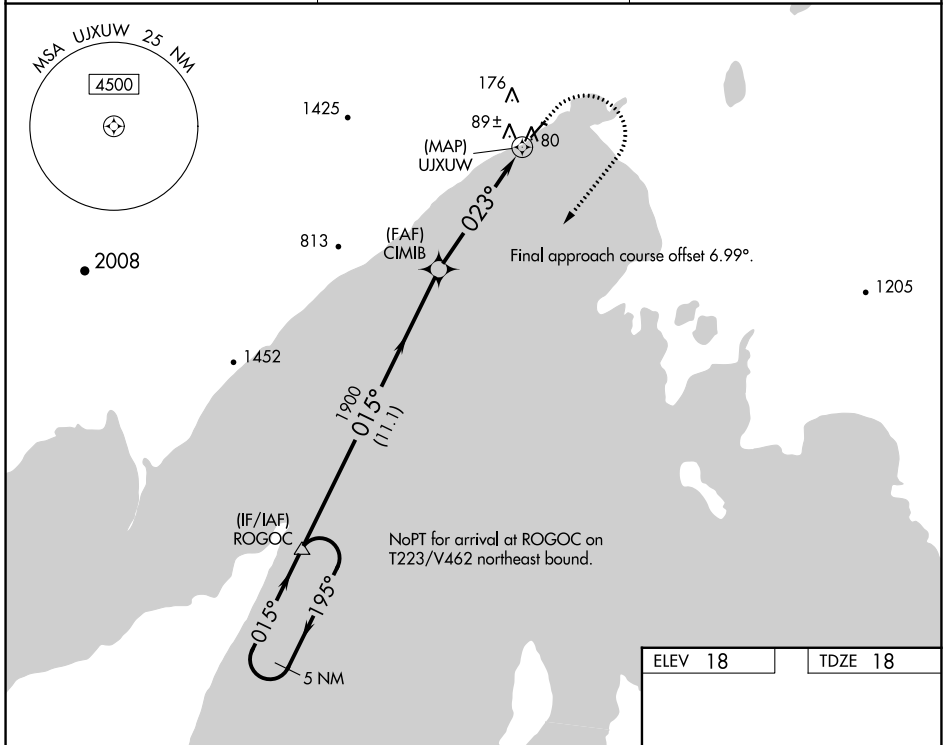
WAAS CH <b>69441</b> <b>W03A</b>	APP CRS <b>023°</b>	Rwy ldg TDZE Apt Elev	<b>4400</b> <b>18</b> <b>18</b>
--	------------------------	-----------------------------	---------------------------------------

# RNAV (GPS) RWY 3

TOGIAK (TOG)(PATG)

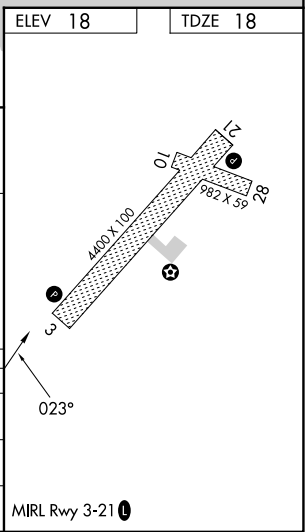
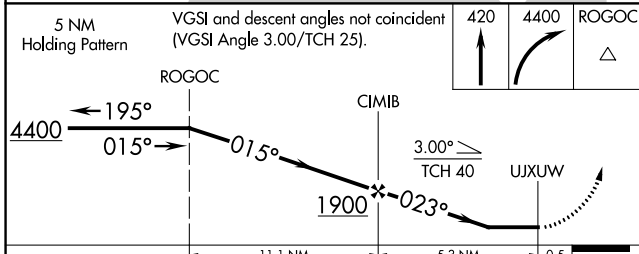
<p><b>⚠</b> Circling NA northwest of Rwy 3-21.  <b>⚠</b> Rwy 3 helicopter visibility reduction below 1 SM NA.                  DME/DME RNP-0.3 NA. Procedure NA at night.</p>	<p><b>MISSED APPROACH:</b> Climb to 420 then climbing right turn to 4400 direct ROGOC and hold, continue climb-in-hold to 4400.</p>
---	---

AWOS-3P <b>119.3</b>	ANCHORAGE CENTER <b>132.75 282.35</b>	CTAF <b>122.5</b>
-------------------------	--	----------------------



AK, 05 SEP 2024 to 31 OCT 2024

AK, 05 SEP 2024 to 31 OCT 2024



CATEGORY	A	B	C	D
LP MDA	380-1 362 (400-1)			
LNVA MDA	400-1	382 (400-1)	400-1½	382 (400-1½)
<b>C</b> CIRCLING	400-1 382 (400-1)	480-1 462 (500-1)	480-1½ 462 (500-1½)	800-2½ 782 (800-2½)