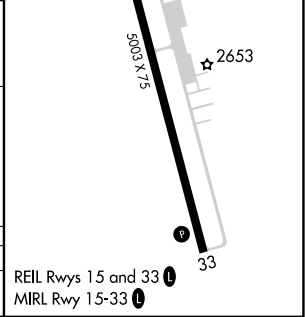
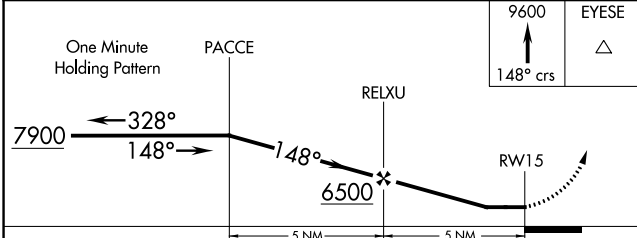
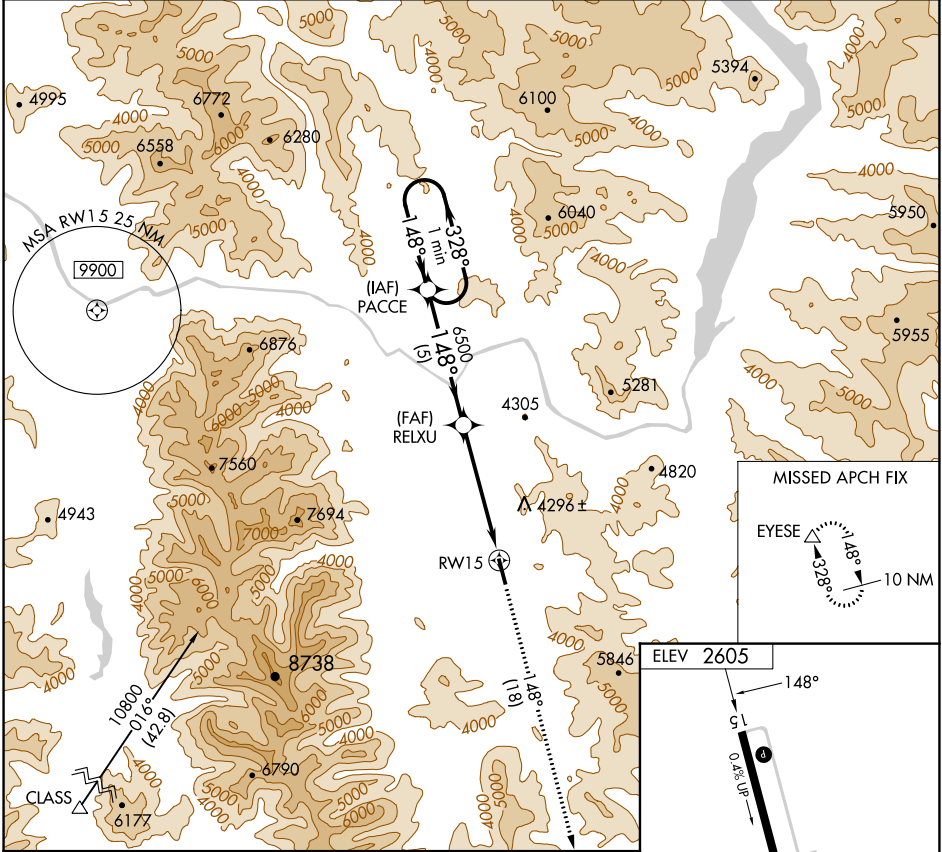


APP CRS	Rwy Idg	N/A
148°	TDZE	N/A
	Apt Elev	2605

GPS-A  
LIBBY (S59)

<p><b>NA</b></p> <p>Procedure NA at night. Rwy 15, 33 helicopter visibility reduction below 1 SM NA. When local altimeter setting not received, procedure NA.</p>	<p>MISSED APPROACH: Climb to 9600 on 148° course to EYESE and hold.</p>
---	---

<p>AWOS-A</p> <p><b>118.575</b></p>	<p>SEATTLE CENTER</p> <p><b>123.95 290.55</b></p>	<p>UNICOM</p> <p><b>122.8 (CTAF) 0</b></p>
-------------------------------------	---	--



CATEGORY	A	B	C	D
CIRCLING	5240-1¼ 2635 (2700-1¼)	5240-1½ 2635 (2700-1½)	NA	

REIL Rwy 15 and 33 0  
MIRL Rwy 15-33 0

NW-1, 03 OCT 2024 to 31 OCT 2024

NW-1, 03 OCT 2024 to 31 OCT 2024