

OENNS ONE DEPARTURE (RNAV)

AL-6841 (FAA)

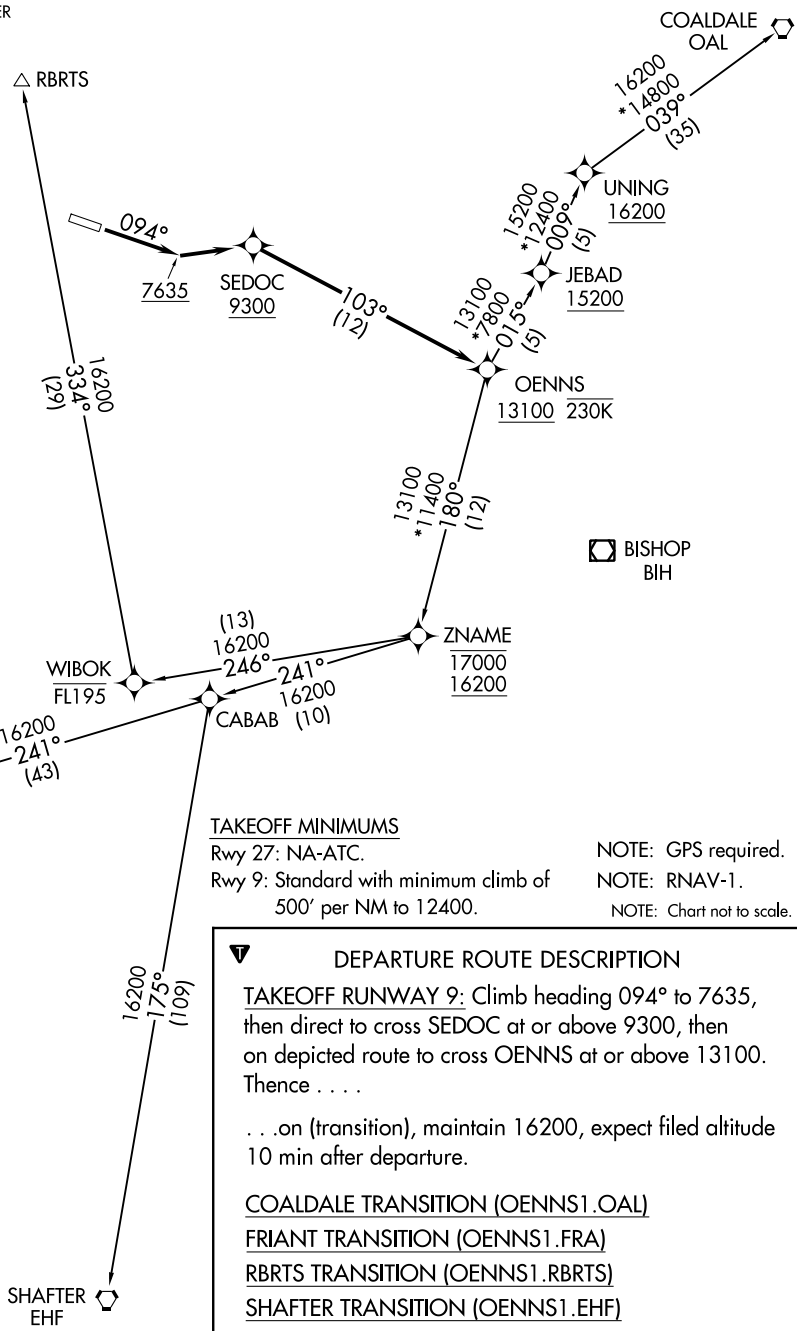
MAMMOTH YOSEMITE (MMH)
MAMMOTH LAKES, CALIFORNIA

OAKLAND CENTER
125.75 284.65
UNICOM
122.8 (CTAF)
AWOS-3
118.05

△ RBRTS

COALDALE
OAL

☐ BISHOP
BIH



SW-2, 03 OCT 2024 to 31 OCT 2024

SW-2, 03 OCT 2024 to 31 OCT 2024

TAKEOFF MINIMUMS

Rwy 27: NA-ATC.
Rwy 9: Standard with minimum climb of
500' per NM to 12400.

NOTE: GPS required.
NOTE: RNAV-1.
NOTE: Chart not to scale.

▼ DEPARTURE ROUTE DESCRIPTION

TAKEOFF RUNWAY 9: Climb heading 094° to 7635, then direct to cross SEDOC at or above 9300, then on depicted route to cross OENNS at or above 13100. Thence

. . . on (transition), maintain 16200, expect filed altitude 10 min after departure.

COALDALE TRANSITION (OENNS1.OAL)
FRIANT TRANSITION (OENNS1.FRA)
RBRTS TRANSITION (OENNS1.RBRTS)
SHAFTER TRANSITION (OENNS1.EHF)

OENNS ONE DEPARTURE (RNAV)