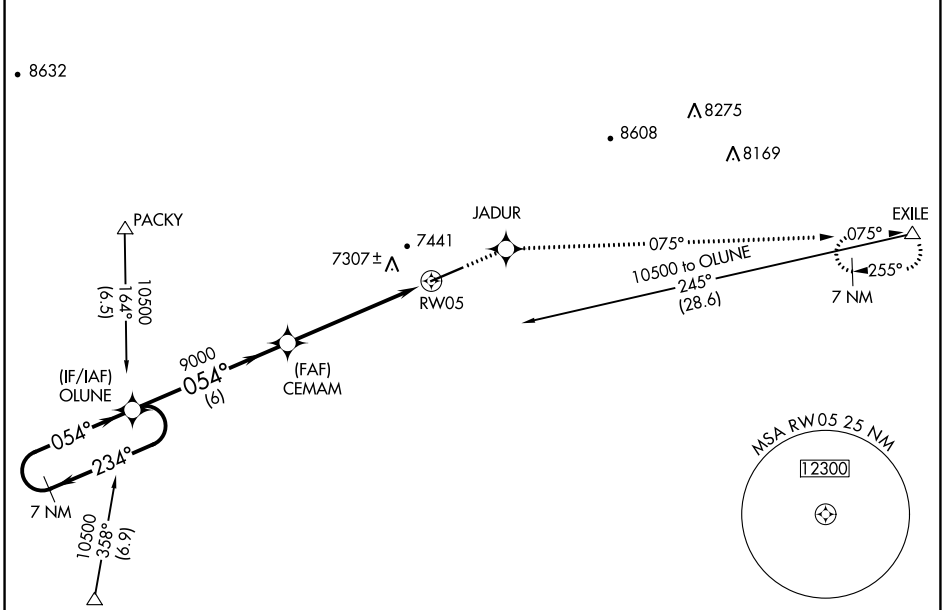


WAAS CH 78302 W05A	APP CRS 054°	Rwy Idg TDZE Apt Elev	7300 7141 7143
--	------------------------	-----------------------------	---

RNAV (GPS) RWY 5

EVANSTON-UINTA COUNTY BURNS FLD (E V W)

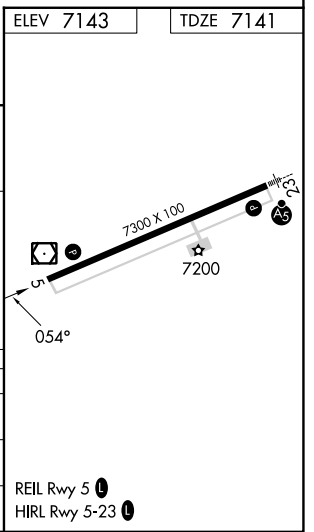
RNP APCH. ▼ If local altimeter setting not received, procedure NA. For uncompensated Baro-VNAV systems, LNAV/VNAV NA below -29°C (-20°F) or above 34°C (94°F).		MISSED APPROACH: Climb to 12000 direct JADUR and via 075° track to EXILE and hold, continue climb-in-hold to 12000.	
ASOS 120.0	SALT LAKE CENTER 127.7 354.125	GCO 121.72	UNICOM 123.0 (CTAF) 0



NW-1, 03 OCT 2024 to 31 OCT 2024

NW-1, 03 OCT 2024 to 31 OCT 2024

ELEV 7143		TDZE 7141	
<p>VGSI and RNAV glidepath not coincident (VGSI Angle 3.00/TCH 45). 7 NM Holding Pattern</p>			
CATEGORY		A	D
LPV DA		7391- ³ / ₄	250 (300- ³ / ₄)
LNAV/VNAV DA		7643-1 ³ / ₄	502 (500-1 ³ / ₄)
LNAV MDA		7440-1	299 (300-1)



RNAV (GPS) RWY 5