

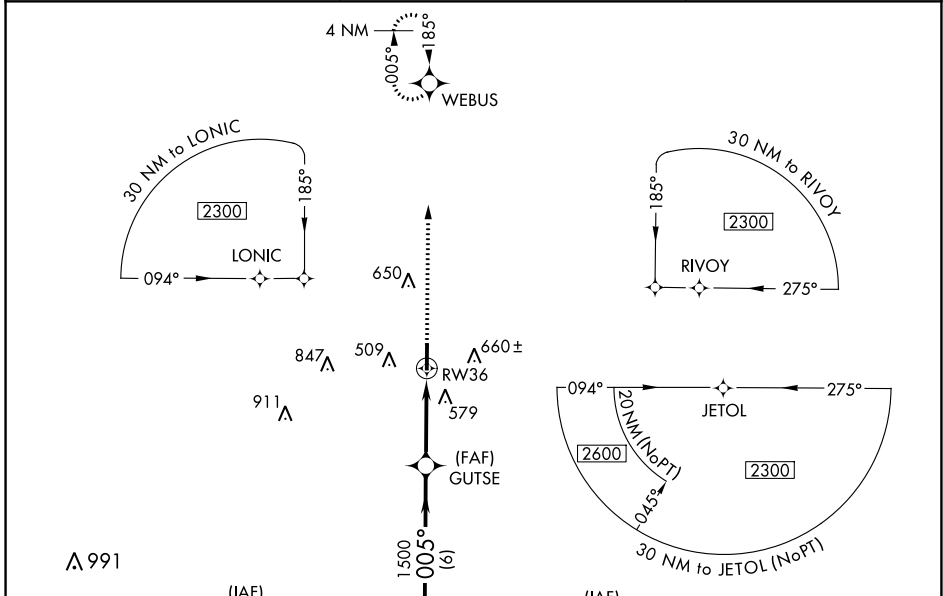
APP CRS	Rwy Idg	5003
005°	TDZE	339
	Apt Elev	345

RNAV (GPS) RWY 36

DR C P SAVAGE SR (53A)

RNP APCH.	<p>Use Americus altimeter setting, when not received use Macon altimeter setting and increase all MDA 20 feet, increase LNAV Cat C visibility to 1$\frac{3}{4}$. Procedure NA at night. Rwy 36 helicopter visibility reduction below 1 SM NA.</p>	<p>MISSED APPROACH: Climb to 2300 direct WEBUS WP and hold.</p>
<p>▽ Use Americus altimeter setting, when not received use Macon altimeter setting and increase all MDA 20 feet, increase LNAV Cat C visibility to 1$\frac{3}{4}$. Procedure NA at night. Rwy 36 helicopter visibility reduction below 1 SM NA.</p> <p>△ NA</p>		

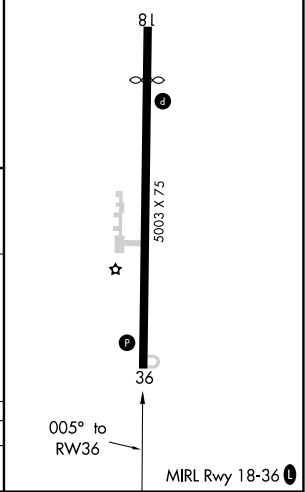
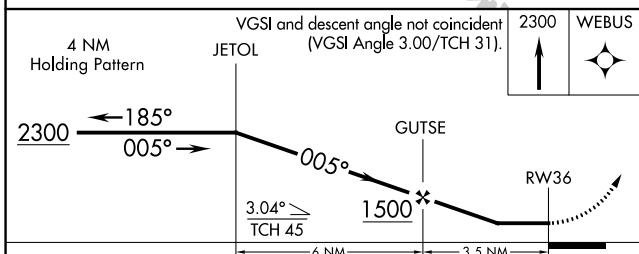
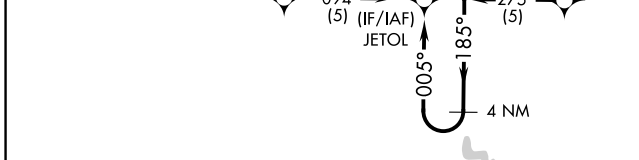
ACJ AWOS-3 128.375	ATLANTA APP CON * 124.2 279.6	CTAF 122.9
------------------------------	---	----------------------



SE-4, 03 OCT 2024 to 31 OCT 2024

SE-4, 03 OCT 2024 to 31 OCT 2024

ELEV	345	TDZE	339
------	------------	------	------------



CATEGORY	A	B	C	D
LNAV MDA	900-1	561 (600-1)	900-1 $\frac{5}{8}$ 561 (600-1 $\frac{5}{8}$)	NA