

WAAS CH 61208 W30A	APP CRS 304°	Rwy Idg 3197 TDZE 455 Apt Elev 455
--	------------------------	---

RNAV (GPS) RWY 30

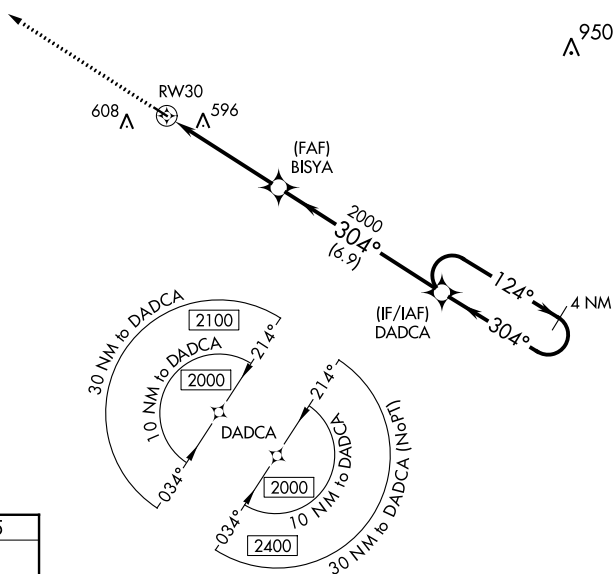
PRENTISS-JEFFERSON DAVIS COUNTY (M43)

▼ Baro-VNAV NA, DME/DME RNP-0.3 NA. Use Brookhaven altimeter setting; when not received, use Hattiesburg/Laurel altimeter setting and increase all DA 27 feet and all MDA 40 feet. Helicopter visibility reduction below $\frac{3}{4}$ SM NA.

▲ NA

MISSED APPROACH:
Climb to 2000 direct
CESMA and hold.

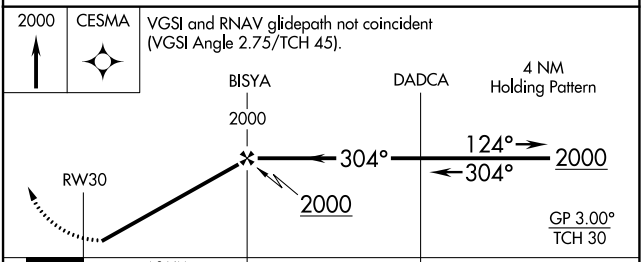
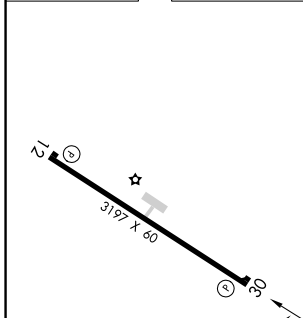
1R7 AWOS-3P 118.125	HOUSTON CENTER 126.8 327.8	UNICOM 122.8 (CTAF) 0
-------------------------------	--------------------------------------	---------------------------------



SC-4, 03 OCT 2024 to 31 OCT 2024

SC-4, 03 OCT 2024 to 31 OCT 2024

ELEV 455	TDZE 455
-----------------	-----------------



CATEGORY	A	B	C	D
LPV DA	770-1 $\frac{1}{8}$	315 (400-1 $\frac{1}{8}$)		NA
LNAV/VNAV DA	797-1 $\frac{1}{4}$	342 (400-1 $\frac{1}{4}$)		NA
LNAV MDA	980-1	525 (600-1)		NA
C CIRCLING	1020-1 565 (600-1)	1080-1 625 (700-1)		NA