

JUDTH SEVEN DEPARTURE (RNAV)

AL-6915 (FAA)

GLENDALE RGNL (G^{ETU})
GLENDALE, ARIZONA

SW-4, 03 OCT 2024 to 31 OCT 2024

TOP ALTITUDE: ASSIGNED BY ATC

DEPARTURE ROUTE DESCRIPTION

TAKEOFF RUNWAY 1: Climb heading 014° or as assigned by ATC, thence . . .

TAKEOFF RUNWAY 19: Climb heading 200° or as assigned by ATC, thence . . .

. . . expect RADAR vectors to GBN VORTAC, then on track 249° to JUDTH, then on (transition). Maintain ATC assigned altitude, expect filed altitude 3 minutes after departure.

MOHAK TRANSITION (JUDTH7.MOHAK)

NOTE: RNAV 1.

NOTE: Turbojets and turboprops only.

NOTE: RADAR required.

NOTE: GPS required.

NOTE: Aircraft departing KGEU and KGYR ATC assigned only.

TAKEOFF MINIMUMS

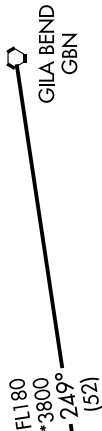
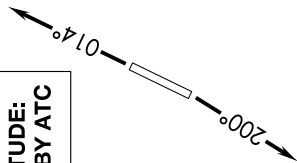
Rwys 1, 19: Standard.

- ATIS 119.425
- GND CON 118.0
- GLENDALE TOWER * 121.0
- LUKE DEP CON * 118.15 363.125
- PHOENIX DEP CON 120.7 239.0



JUDTH SEVEN DEPARTURE (RNAV)

GLENDALE, ARIZONA
GLENDALE RGNL (G^{ETU})



NOTE: Chart not to scale.

SW-4, 03 OCT 2024 to 31 OCT 2024