

APP CRS	Rwy Idg	3707
354°	TDZE	1560
	Apt Elev	1561

RNAV (GPS) RWY 35

ARLEDGE FLD (F56)

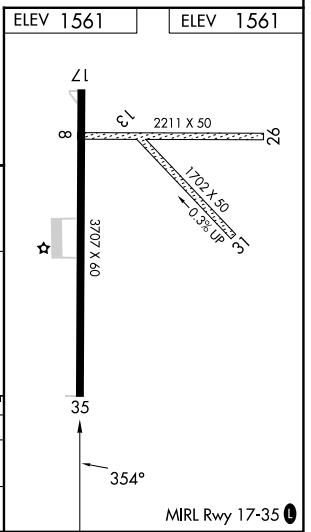
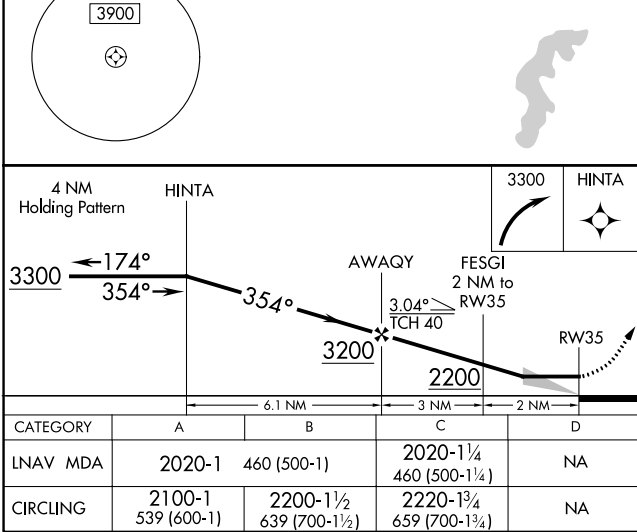
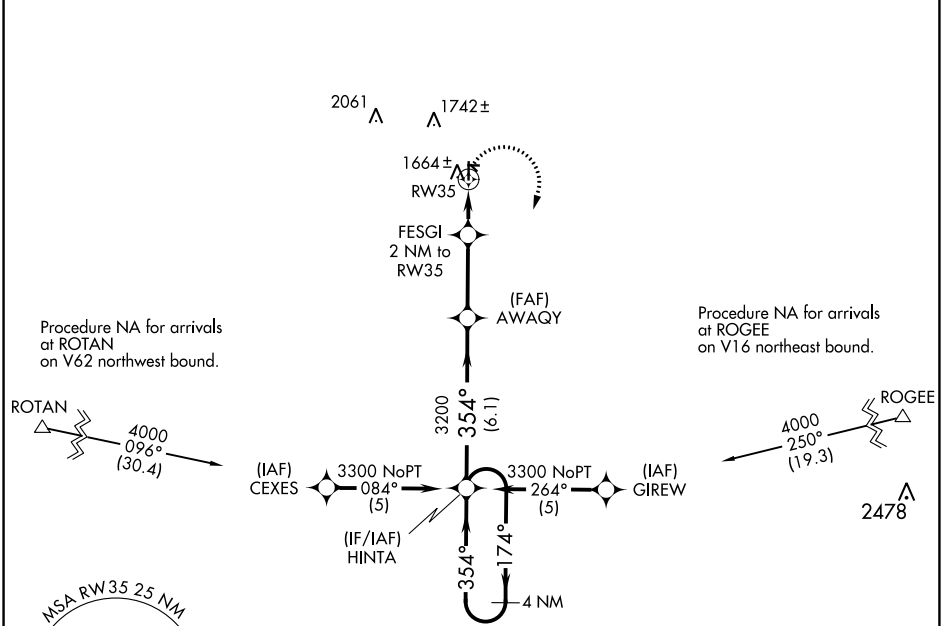
RNP APCH-GPS.

▽ Use Abilene Rgnl altimeter setting; when not received use Breckenridge altimeter setting and increase all MDAs 40 feet and visibility Cat C ¼ SM. Procedure NA at night. Circling NA to Rwy 8/26 and 13/31.

△ NA

MISSED APPROACH: Climbing right turn to 3300 direct HINTA and hold.

ABILENE APP CON 127.2 282.3	UNICOM 122.8 (CTAF) 0
---------------------------------------	---------------------------------



CATEGORY	A	B	C	D
RNAV MDA	2020-1	460 (500-1)	2020-1¼ 460 (500-1¼)	NA
CIRCLING	2100-1 539 (600-1)	2200-1½ 639 (700-1½)	2220-1¾ 659 (700-1¾)	NA

SC-2, 03 OCT 2024 to 31 OCT 2024

SC-2, 03 OCT 2024 to 31 OCT 2024