

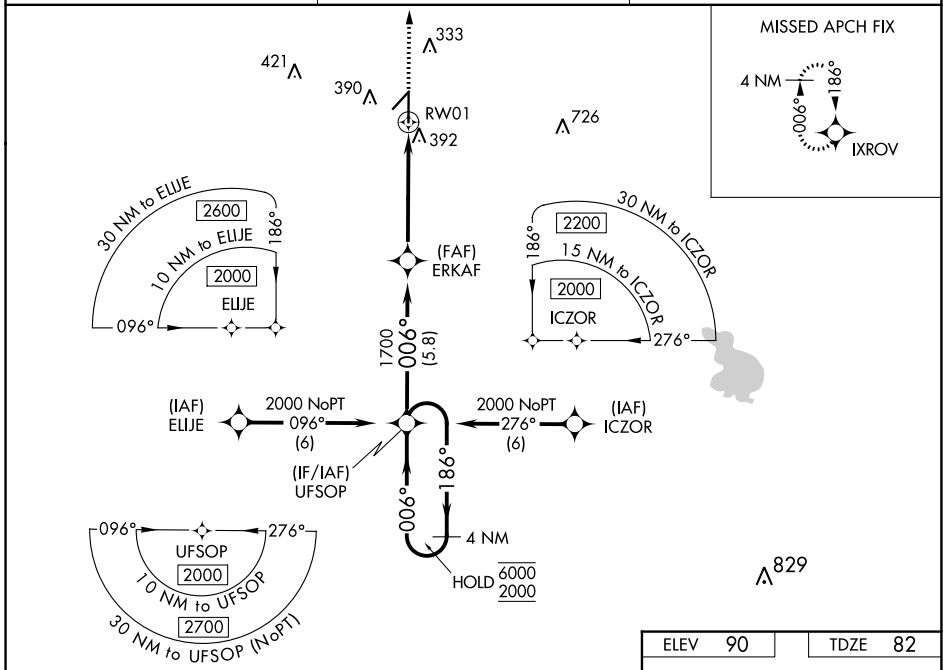
WAAS CH <b>69636</b> <b>W01A</b>	APP CRS <b>006°</b>	Rwy Idg TDZE Apt Elev	<b>6201</b> <b>82</b> <b>90</b>
--	------------------------	-----------------------------	---------------------------------------

# RNAV (GPS) RWY 1

ZEPHYRHILLS MUNI (ZPH)

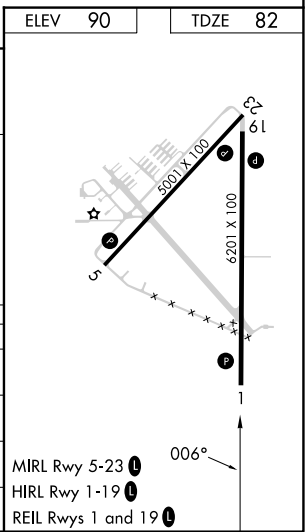
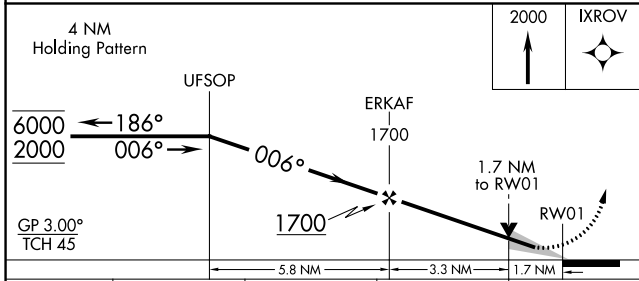
RNP APCH - GPS	MISSED APPROACH: Climb to 2000 direct IXROV and hold.
<p>▼ For uncompensated Baro-VNAV systems, LNAV/VNAV NA below -15°C or above 54°C.</p> <p>▲</p>	

AWOS-3PT <b>118.975</b>	TAMPA APP CON <b>119.9 290.3</b>	UNICOM <b>123.075</b> (CTAF) <b>1</b>
----------------------------	-------------------------------------	--



SE-3, 03 OCT 2024 to 31 OCT 2024

SE-3, 03 OCT 2024 to 31 OCT 2024



CATEGORY	A	B	C	D
LPV DA		332-7/8	250 (300-7/8)	
LNAV/VNAV DA		553-13/8	471 (500-13/8)	
LNAV MDA	660-1	578 (600-1)	660-15/8	578 (600-15/8)
<b>C</b> CIRCLING	700-1	610 (700-1)	700-13/4 610 (700-13/4)	780-21/4 690 (700-21/4)