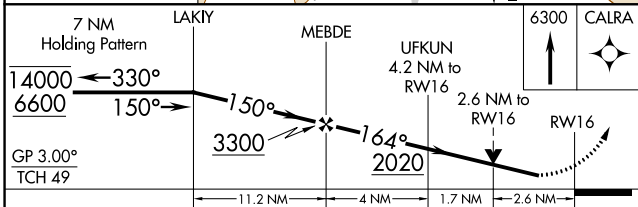
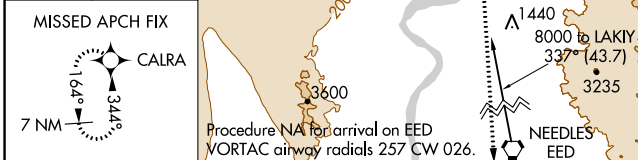


WAAS CH <b>82624</b> <b>W16A</b>	APP CRS <b>164°</b>	Rwy Idg TDZE Apt Elev	<b>8500</b> <b>646</b> <b>707</b>
--	------------------------	-----------------------------	---

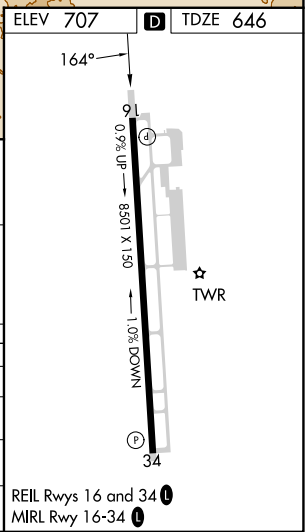
# RNAV (GPS) RWY 16

LAUGHLIN/BULLHEAD INTL (IFP)

RNP APCH - GPS.		MISSED APPROACH: Climb to 6300 direct CALRA and hold, continue climb-in-hold to 6300.	
ATIS* <b>119.825</b>	LOS ANGELES CENTER <b>134.65 360.65</b>	BULLHEAD TOWER* <b>123.9 (CTAF)</b>	GND CON <b>118.25</b>



CATEGORY	A	B	C	D
LPV DA		1048-1½	402 (400-1½)	
LNAV/VNAV DA		1500-2½	854 (800-2½)	
LNAV MDA	1500-1 854 (800-1)	1500-1¼ 854 (800-1¼)	1500-2½	854 (800-2½)
CIRCLING	1500-1 793 (800-1)	1560-1¼ 853 (900-1¼)	1800-3 1093 (1100-3)	2340-3 1633 (1700-3)



SW-4, 03 OCT 2024 to 31 OCT 2024

SW-4, 03 OCT 2024 to 31 OCT 2024