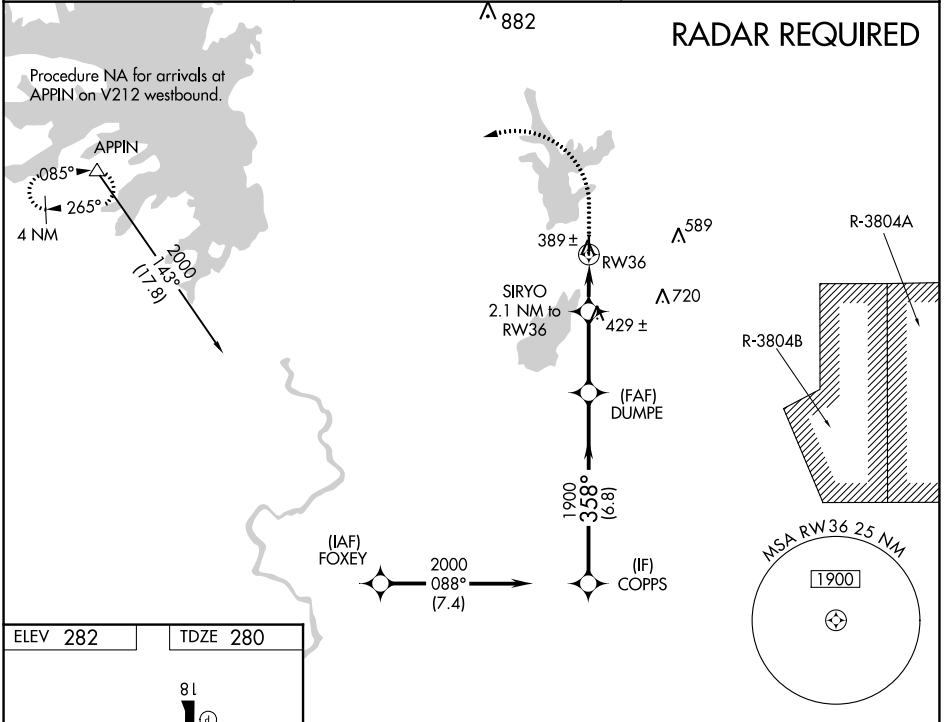


WAAS CH <b>40325</b> <b>W36A</b>	APP CRS <b>358°</b>	Rwy Idg <b>3807</b> TDZE <b>280</b> Apt Elev <b>282</b>
--	------------------------	---

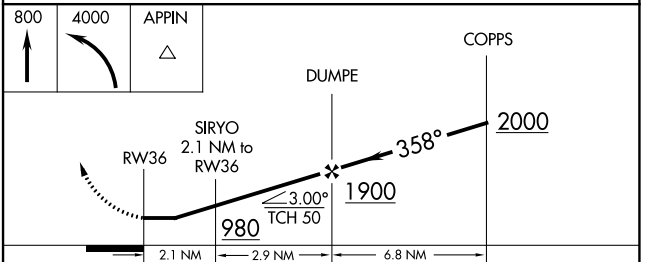
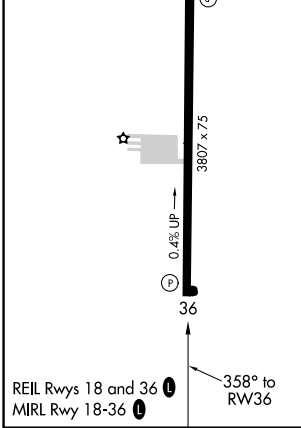
# RNAV (GPS) RWY 36

LEESVILLE (L39)

<p><b>⚠</b> When VGSI inop, Straight-in/Circling Rwy 36 procedure NA at night. DME/DME NA RNP-0.3 NA. Visibility reduction by helicopters NA. Use Fort Polk altimeter setting; when not received, use De Ridder altimeter setting and increase all MDA 40 feet, increase LP Cat C visibility 1/8 SM, and Circling Cat C visibility 1/4 SM.</p>	<p>MISSED APPROACH: Climb to 800 then climbing left turn to 4000 direct APPIN and hold.</p>	
<p>KPOE ATIS <b>134.85 282.2</b></p>	<p>POLK APP CON <b>123.7 261.3</b></p>	<p>UNICOM <b>122.8</b> (CTAF) <b>📻</b></p>



ELEV 282	TDZE 280
----------	----------



CATEGORY	A	B	C	D
LP MDA	680-1	400 (400-1)	680-1 1/8 400 (400-1 1/8)	NA
LNAV MDA	720-1	440 (500-1)	720-1 3/8 440 (500-1 3/8)	NA
CIRCLING	760-1 478 (500-1)	800-1 518 (600-1)	1000-2 718 (800-2)	NA

SC-4, 03 OCT 2024 to 31 OCT 2024

SC-4, 03 OCT 2024 to 31 OCT 2024