

APP CRS
241°

Rwy Idg **5101**
TDZE **3313**
Apt Elev **3313**

RNAV (GPS) RWY 26

IDAHO COUNTY (GIC)

RNP APCH - GPS.

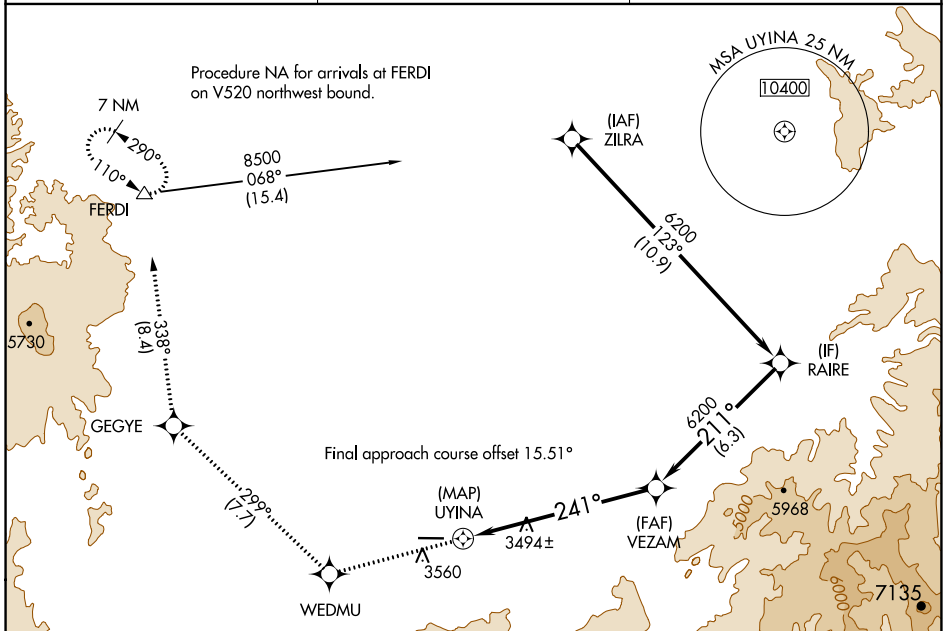
MISSED APPROACH: Climb to 7300 direct WEDMU and on track 299° to GEGYE and on track 338° to FERDI and hold, continue climb-in-hold to 7300.

⚠ Circling NA south of Rwy 8-26.

AWOS-3 **118.175**

SEATTLE CENTER **123.95 290.55**

CTAF **122.8**



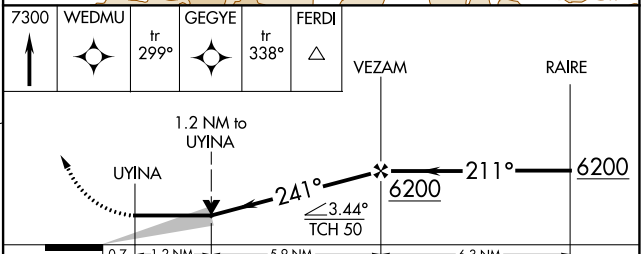
ELEV 3313 TDZE 3313

5101 X 75

0.5% UP

26

241°



CATEGORY	A	B	C	D
LNAV MDA	4060-1 747 (800-1)	4060-1¼ 747 (800-1¼)	4060-2	747 (800-2)
C CIRCLING	4060-1 747 (800-1)	4060-1¼ 747 (800-1¼)	4060-2¼ 747 (800-2¼)	4060-2½ 747 (800-2½)

MRL Rwy 8-26

REIL Rwy 8

NW-1, 03 OCT 2024 to 31 OCT 2024

NW-1, 03 OCT 2024 to 31 OCT 2024