

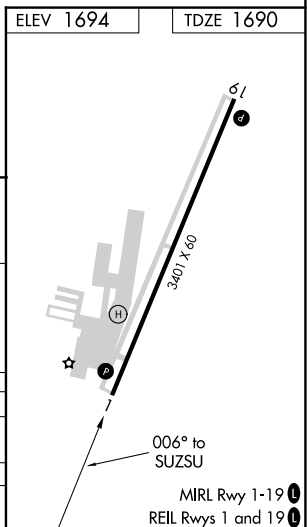
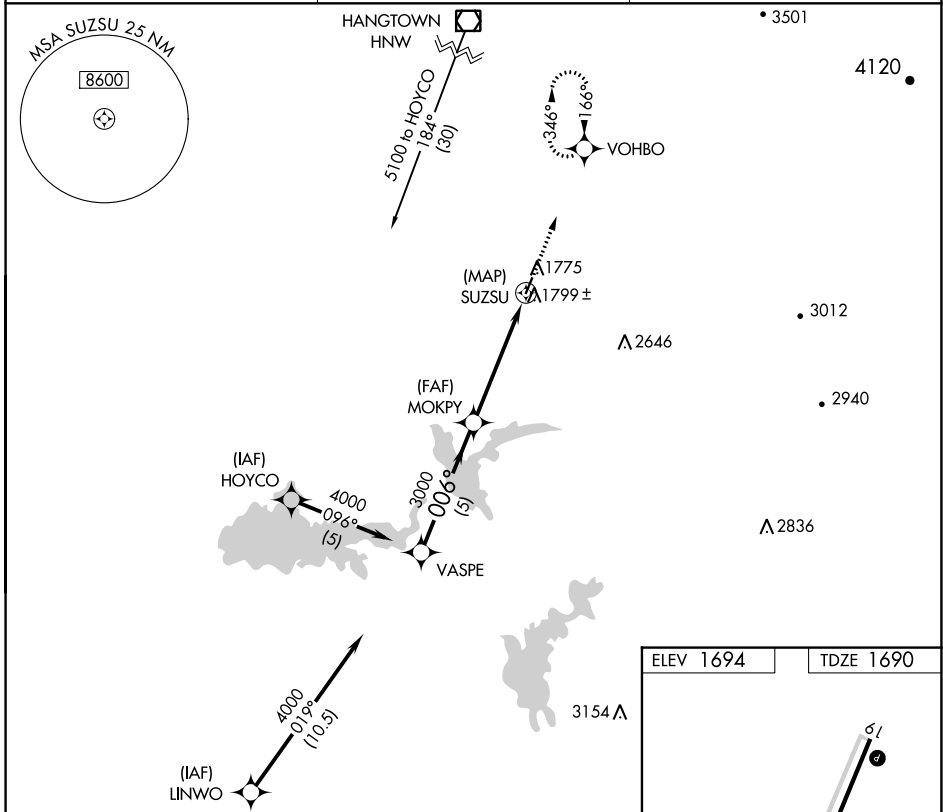
APP CRS **006°**
 Rwy Idg **3401**
 TDZE **1690**
 Apt Elev **1694**

GPS RWY 1
 WESTOVER FLD AMADOR COUNTY (JAQ)

NA When local altimeter setting not received, use Sacramento Exec altimeter setting.

MISSED APPROACH: Climb to 4500 on 006° course to VOHBO and hold.

AWOS-3 **121.125** NORCAL APP CON **125.1 363.2** UNICOM **123.075 (CTAF)**



Procedure Turn NA	VASPE		MOKPY		SUZSU		4500	VOHBO
	4000		3000				006° crs	
CATEGORY	A	B	C	D				
S-1	2060-1	370 (400-1)	NA					
SACRAMENTO EXEC ALTIMETER SETTING MINIMUMS								
S-1	2380-1	690 (700-1)	NA					

SW-2, 03 OCT 2024 to 31 OCT 2024

SW-2, 03 OCT 2024 to 31 OCT 2024