

WAAS CH <b>90515</b> <b>W07A</b>	APP CRS <b>068°</b>	Rwy Idg TDZE Apt Elev	<b>3500</b> <b>1532</b> <b>1538</b>
--	------------------------	-----------------------------	---

# RNAV (GPS) RWY 7

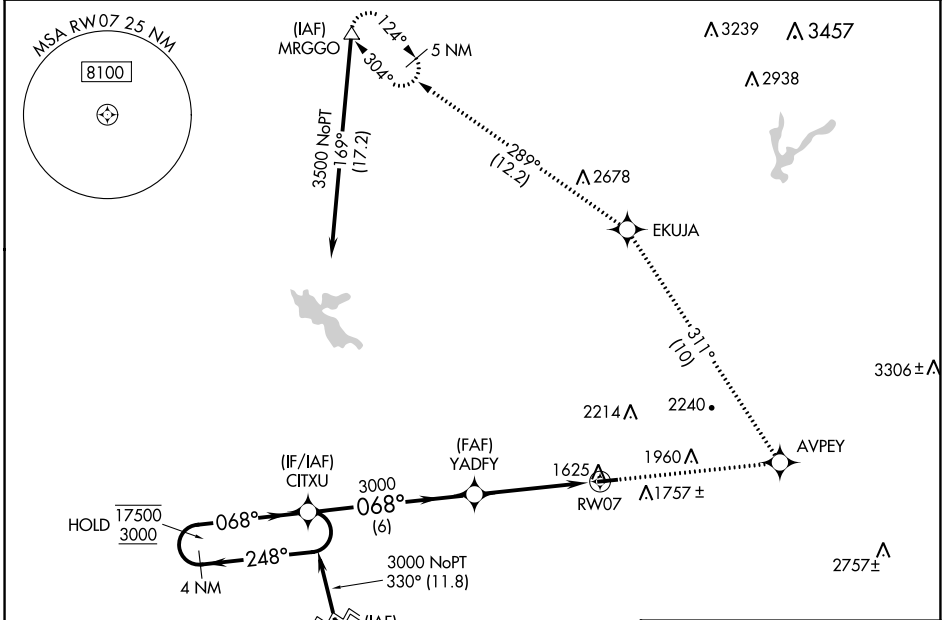
AUBURN MUNI (AUN)

RNP APCH.

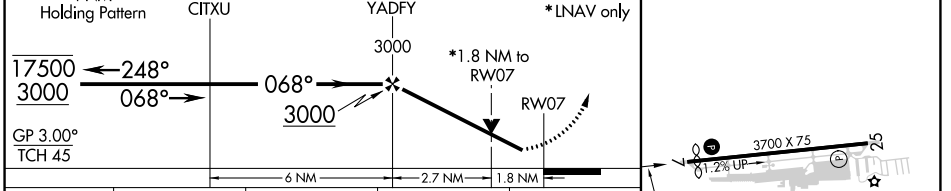
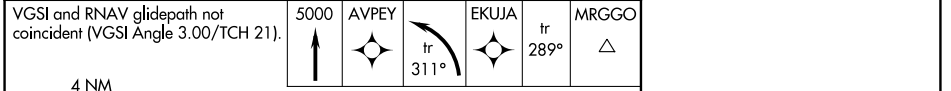
**▼** Circling Rwy 25 NA at night. Rwy 7 helicopter visibility reduction below 3/4 SM NA. For uncompensated Baro-VNAV systems, LNAV/VNAV NA below -18°C or above 54°C.

**▲** MISSED APPROACH: Climb to 5000 direct AVPEY and left turn on track 311° to EKUJA and on track 289° to MRGGO and hold.

AWOS-3 <b>119.375</b>	NORCAL APP CON <b>125.4 317.5</b>	UNICOM <b>122.7 (CTAF) 0</b>
--------------------------	--------------------------------------	---------------------------------



ELEV 1538	TDZE 1532
-----------	-----------



CATEGORY	A	B	C	D
LPV DA	1848-1¼	316 (400-1¼)		NA
LNAV/VNAV DA	1968-1¾	436 (500-1¾)		NA
LNAV MDA	2100-1	568 (600-1)		NA
<b>C</b> CIRCLING	2200-1 662 (700-1)	2400-1¼ 862 (900-1¼)		NA

MIRL Rwy 7-25 0

SW-2, 03 OCT 2024 to 31 OCT 2024

SW-2, 03 OCT 2024 to 31 OCT 2024