

TALLULAH, LOUISIANA

AL-9196 (FAA)

22363

WAAS Chan 99700 W36A	APP CRS 357°	Rwy ldg 5002 TDZE 86 Aprt Elev 86
--	------------------------	--

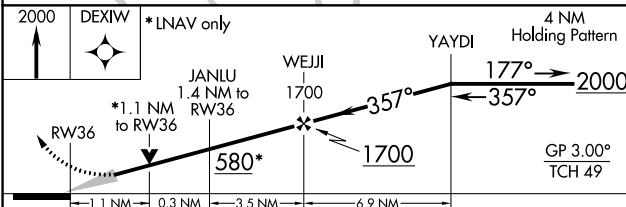
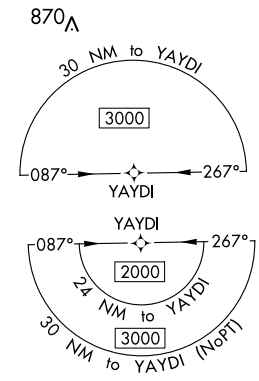
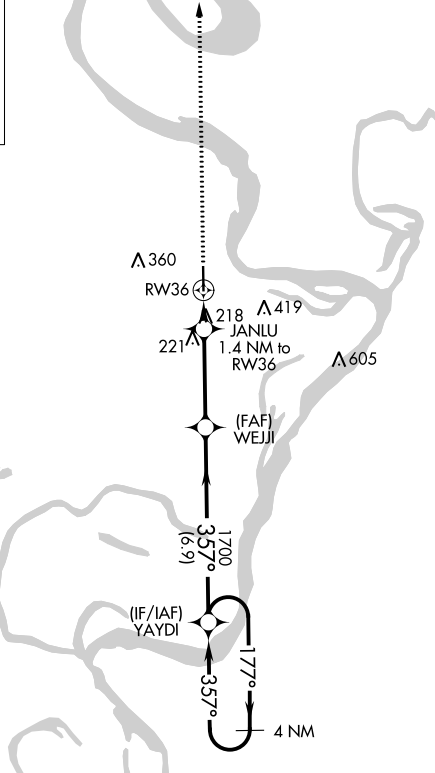
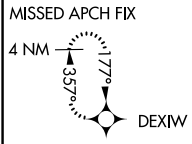
RNAV (GPS) RWY 36

VICKSBURG TALLULAH RGNL (TVR)

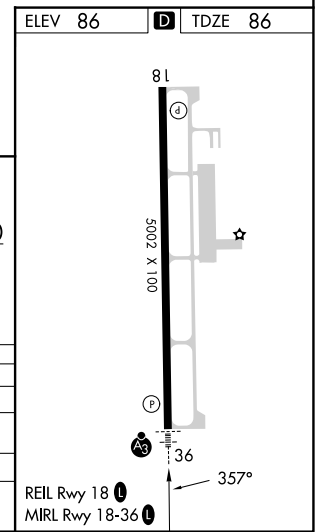
⚠ For uncompensated Baro-VNAV systems, LNAV/VNAV NA below -8°C (18°F) or above 54°C (130°F). DME/DME RNP-0.3 NA. When local altimeter setting not received, use Vicksburg Muni, MS altimeter setting and increase LPV DA to 309 feet, LNAV/VNAV DA to 516 feet all visibilities 1/8 mile; increase all MDA 40 feet and visibility Cats C/D 1/4 mile. Baro-VNAV and VDP NA with Vicksburg Muni, MS altimeter setting.

SSALR 	MISSED APPROACH: Climb to 2000 direct DEXIW and hold.
-----------	--

ASOS 118.525	MEMPHIS CENTER 132.5 259.1	UNICOM 123.0 (CTAF)
------------------------	--------------------------------------	-------------------------------



CATEGORY	A	B	C	D
LPV DA		286-1/2	200 (200-1/2)	
LNAV/VNAV DA		493-7/8	407 (500-7/8)	
LNAV MDA	480-1/2	394 (400-1/2)	480-5/8	394 (400-3/8)
C CIRCLING	540-1	454 (500-1)	720-1 3/4 634 (700-1 3/4)	720-2 634 (700-2)



TALLULAH, LOUISIANA
Amdt 4 15SEP16

32°21'N-91°02'W

VICKSBURG TALLULAH RGNL (TVR)

RNAV (GPS) RWY 36

SC-4, 03 OCT 2024 to 31 OCT 2024

SC-4, 03 OCT 2024 to 31 OCT 2024